

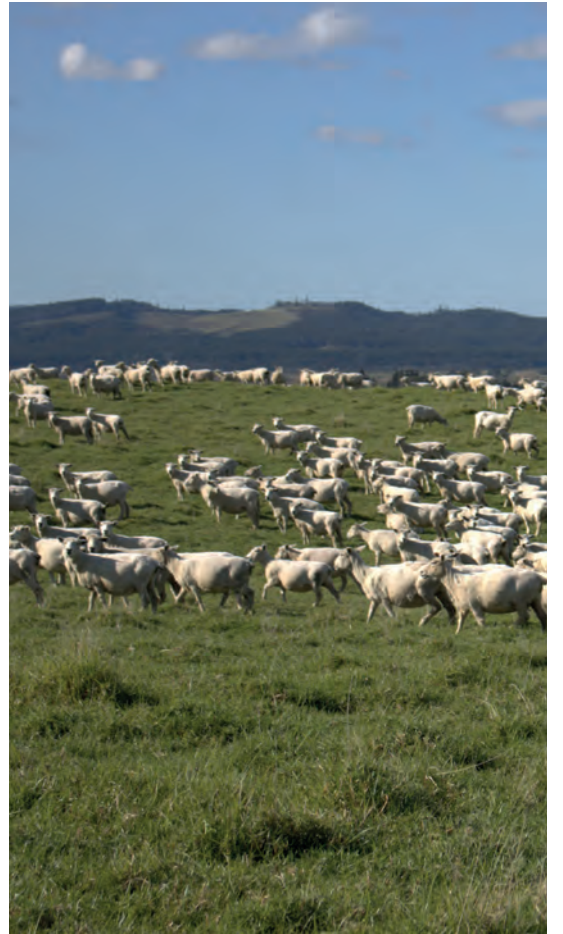


ŌTAKANINI TŌPŪ
INCORPORATED
ANNUAL REPORT

2023-2024



ŌTAKANINI TŌPŪ



DIRECTORY

NATURE OF BUSINESS	Sheep & Cattle Farming Forestry
LOCATION OF PROPERTY	405 South Head Road, Helensville
LEASED PROPERTY	2127 Kaipara Coast Highway, Makarau (lease ended 31 January 2024)
COMMITTEE OF MANAGEMENT	Jeffrey Bradly (resigned) Gary Brown Trisya Hemana (Chair) Michelle Hill Marama Stead Florence Te Ohaere (resigned) Rihari Wilson
SECRETARY	Rebecca Batie
ACCOUNTANT	Todd Wilkins Withers & Co Ltd
AUDITOR	Jason Edwards HLB Mann Judd Auckland
BANK	Bank of New Zealand Kumeu
IRD NUMBER	10-602-335

2024 ANNUAL GENERAL MEETING

The Committee of Management members of the Ōtakanini Tōpū Incorporation wish to advise that the Annual General Meeting (AGM) of Shareholders will be held on Saturday 14 December 2024, commencing at 10.00am at Ōtakanini Haranui Marae, 64 Haranui Road, Helensville.

AGENDA

1. Karakia / Mihi
2. Apologies
3. Candidate Presentations
4. Previous Minutes - Minutes of the 2023 AGM
5. Chair Report
6. Farm Report
7. Financial Report
8. Resolutions
9. General Business (to consider any other matters considered appropriate by the Chair)

ELECTION OF FOUR COMMITTEE OF MANAGEMENT MEMBERS

Nominations for four (4) Committee of Management Members open on Tuesday 29 October 2024, consisting of:

- two (2) Trustees for a one year term, fulfilling Extraordinary Vacancies; and
- two (2) Trustees for a three year term..

Nominations can only be made on the official nomination forms which are available to download from www.otakaninitopu.co.nz or by emailing admin@otakaninitopu.co.nz

RESOLUTIONS REQUIRED

Voting on the following resolutions will be available at the AGM on Saturday 14 December 2024, between 10.00am and 1.00pm.

1. Receive and Confirm the Minutes of the 2023 AGM
2. Receive and confirm the Consolidated Financial Statements and Auditors Report of the Year Ended 30 June 2024
3. Appoint an Auditor and Share Valuer for the Financial Year 2025
4. Remuneration of Committee of Management members of Ōtakanini Tōpū Incorporation remains unchanged for the 30 June 2025 Financial Year
5. Authorise by resolution, a dividend to be paid to shareholders

METHOD OF VOTING

Independent Election Services have been engaged to manage the election process on behalf of Ōtakanini Tōpū Incorporation.

Voting for the election of four (4) Committee of Management Members will be by shareholders in attendance at the Annual General Meeting. Voting will open at 10.00am on Saturday 14 December 2024 and will close at 12 noon on Saturday 14 December 2024.

PROXY VOTING

Shareholders of Ōtakanini Tōpū Incorporation are entitled to appoint a proxy to vote on their behalf at the AGM, subject to Ōtakanini Tōpū Incorporation receiving the completed proxy form no later than 12 noon, Friday 13 December 2024. No proxy forms will be accepted on the day.

Proxy forms are available to download

from www.otakaninitopu.co.nz or by emailing admin@otakaninitopu.co.nz

CONTENTS

Chair Report	4
Farm Managers Report	7
Committee of Management - Annual Plan	11
Annual Farm Plan	12
Vision and Mission	14
Values	15
Financial Statements	16
Accountants Report	38
AGM Minutes 2023	42
Share Register 2024	49
Unclaimed Dividends	73

ŌTAKANINI TŌPŪ CHAIR REPORT 2023-2024

Kororia ki te atua i runga rawa, he maungarongo ki te whenua, he whakaaro pai ki ngā tāngata katoa. E ngā mana e ngā reo e ngā tini karangamaha, tēnā rā koutou katoa i runga i ngā manaakitanga maha i uhia ai e to tātou Kaihanga ki runga kia tātou katoa.

Ka haere tonu ngā mihi ki ngā mate runga i ngā marae maha, ko rātou kua wheturangitia tatu iho ake ki te tahi a o tātou Kaiarahi. Ko koutou kia koutou, haere, haere, haere.

Kia tātou ngā kanohi ora, e mihi ana.

It is my privilege to present the Chair's Report for the 2023-2024 financial year, reflecting on the achievements, challenges, and forward momentum of the Ōtakanini Tōpū Incorporation. This year has been a testament to the strength of our mission, values, and strategic direction as we strive to be a progressive sheep, beef, and forest operation that remains future focused and committed to using best practices in all we do.

Our commitment is clear: to improve on past performance in a forward-thinking manner while upholding values that define us. These include:

- Ensuring the well-being of livestock, people, and the environment.
- Continuously seeking ways to improve productivity and protect our resources for future generations.
- Encouraging collaboration between the committee members and kaimahi.
- Embracing new approaches and making sound decisions for the benefit of the Tōpū and its shareholders.
- Maintaining clear, open communication with shareholders and whānau.

Our values have shaped the actions we have taken this year, driving our operations and ensuring that we stay true to both our cultural practices and our commitment to achieving excellence.

Key Achievements

This year, we completed several key governance initiatives:

- We reviewed and adapted our strategic plan to incorporate lessons learned, building resilience to risks like adverse weather and market fluctuations.
- Portfolios were created within the committee, aligning roles with members' time, experience, and skill sets, allowing for more effective governance.
- HazardCo was engaged to assess our Health and Safety policies and practices. The audit findings confirmed that Ōtakanini Tōpū is compliant with current legislation and excels in various aspects of Health and Safety from the committee to on-farm management.
- We secured external funding to engage BDO to carry out a feasibility study to explore additional income streams. We will continue to explore commercial advancement opportunities to diversify our income and increase returns for shareholders.
- The Governance Buddying initiative has created opportunities for whānau to be involved and experience first-hand all facets of governance on the committee.

This year we focussed on continuing to improve the sustainability of our farm infrastructure, livestock quality and addressing environmental responsibilities:

- We have made significant progress on farm infrastructure improvements to support safe access and improve the quality of our stock. While some projects are still ongoing, key policies and procedures are now in place to guide this work.
- Thinning 16.9 hectares of the forest has been completed.
- We have launched targeted environmental initiatives aimed at preserving cultural sites. Three taiao projects are in progress. This includes the preservation and protection of Tarawera maunga, under the guidance received from kaumātua, current and previous committee members.

To ensure we have the right leadership and skills within our farm operations:

- We engaged independent HR recruitment services to fill the Farm Manager and Shepherd General (Junior) roles. This has been a critical step in strengthening our leadership on the farm.
- Witai Povey has been elevated from General Shepherd to Head Shepherd, reflecting his dedication and contribution to the incorporation.
- Our dedicated kaimahi team comprises Jeff Bradly, Witai Povey, Graeson Stead-Hill, Leah Martin, and Rebecca Batie. Their combined efforts are pivotal to the success of Ōtakanini Tōpū's farming operations and overall objectives.

Our commitment to keeping shareholders informed and engaged has been a priority:

- To improve transparency, we have implemented quarterly pānui to ensure shareholders and whānau are regularly updated about Tōpū activities.
- The Share Register is being updated, and we are continuing efforts to communicate with shareholders and their whānau.
- We secured funding through Te Arawhiti's Takutai Moana Financial Assistance Scheme to support the Tōpū's MACA claim. However, due to uncertainty around future funding, we have suspended progress until funding is assured. Many claimants face the same issue, and this challenge is not isolated to just the Tōpū.

Acknowledgments

We extend our deepest thanks to Connie Povey, who retired earlier this year after decades of dedicated service to Ōtakanini Tōpū. Her contribution has been instrumental to the operations on the Tōpū, and we wish her all the best in her future.

The committee also acknowledges the resignations of Florence Te Ohaere and Jeff Bradly from the Committee of Management. Florence steps away to focus on developing the capability of Ōtakanini Haranui Marae and Jeff successfully transitioned to the current Farm Manager role.

Future Goals and Direction

Looking ahead, the Committee of Management has set goals to ensure continued growth.

- We will continue to invest in governance training to develop and grow the capacity of the committee members.
- Our commitment to shareholder and whānau engagement will be strengthened with two planned annual activities and an open day to help whānau understand how to succeed shares.
- We continue to work towards establishing Ōtakanini Tōpū's own Constitution in alignment with the Te Ture Whenua Māori Act. This will involve wānanga with shareholders to ensure collective input.

To close, I would like to acknowledge the committee of management members, our kaimahi, shareholders, and whānau. Your support is vital to the Tōpū's success. As we move forward into the next year, despite economic impacts, I am confident that Ōtakanini Tōpū will thrive, grounded in our values, and focused on sustainable growth for future generations.

Ngā mihi



Trisya Hemana
Chair

ŌTAKANINI TŌPŪ FARM MANAGERS REPORT 2023-2024

Tēnā koutou katoa

I am pleased to present the Ōtakanini Tōpū annual farm report for the 2023-2024 financial year reflecting on our achievements, challenges, and future goals. As shareholders and kaitiaki of this whenua, your support and involvement are vital to the ongoing success of our farming operation.

This report is intended to share the progress we've made, provide transparency on farm operations, and outline the path forward.

Farm Operations Overview

This year has brought positive progress being made to our overall farming operations on the Tōpū. We have continued our focus on best-practice farming aligning with the Tōpū's overarching Vision of Thriving prosperity for the benefit of shareholders and their whānau.

Sheep:

In previous years, lambing numbers have been low, leading to the decision to reduce our flock from 6,400 to 4,600 by culling older ewes that were not performing well. This strategy aimed to improve the genetics of the flock and ultimately increase lambing percentages. We currently have 4,500 Romney ewes (2,600 Terminal and 1,900 Maternal). To further improve genetics, we purchased new sire rams for the maternal flock from a stud known for superior genetics and higher lambing rates.

We completed two rounds of shearing as planned, which has contributed to an increase in both wool income and quality this year.

Cattle:

Our Angus breeding herd has increased to 550 cows, resulting in a 97% in calf scanning rate. We achieved an average two year old steer carcass weight of 297 kg, which aligns with our performance goals. Regular health checks and ongoing monitoring of our stock have helped maintain a low mortality rate.

Whenua Management:

Pasture growth has remained steady throughout the year, benefiting from more stable weather conditions compared to previous years. By placing greater emphasis on rotational grazing and protecting vulnerable areas, we have improved soil health and safeguarded erosion prone areas.

Forestry and Inland Road:

The Committee of Management signed a contract with Taumata Plantations for the use of Inland Road as a thoroughfare, which includes road maintenance to keep it in good condition. This initiative aligns with our strategic diversification and has become a valuable income stream, contributing \$158,753 to our Gross Farming Income. Inland Road and the surrounding forestry are regularly monitored by myself and our kaimahi to ensure security and adherence to maintenance agreements.

The forest remains in good health, and as recommended in the 2022 Forme Forest Valuation Report, the thinning of the 16.9-hectare pine compartment (planted in 2012) has been successfully completed early in the 2025 financial year.

Farm Houses/Rental Income:

The Tōpū’s five farm houses have traditionally been occupied by kaimahi. Due to their age, ongoing maintenance is necessary, and a substantial cash injection is needed for upgrades. Currently, two houses are occupied by kaimahi, one is privately rented, and the traditional farm manager’s house is available for new tenants. Additionally, one house is vacant and requires work.

Renting two of these houses to external tenants would be a positive step toward generating additional income.

Health and Safety

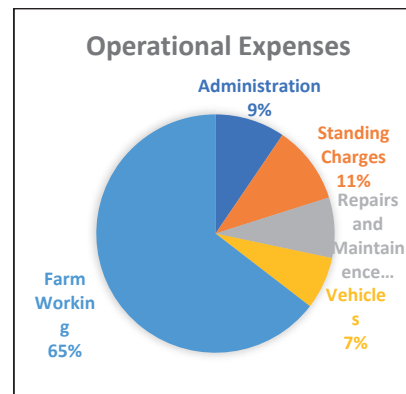
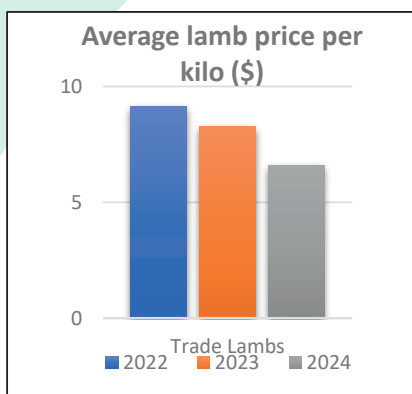
Our commitment to the health and safety of our kaimahi, shareholders and their whānau and all those who interact with the Tōpū remains a priority. We made several updates to our Health and Safety management, ensuring compliance with the Health and Safety at Work Act 2015 and best practices. Key achievements include:

- Zero serious injuries on-farm and a reduction of minor incidents, due to consistent safety training and risk management.
- Regular training for kaimahi covering areas such as machinery safety, livestock handling, workplace first aid and chemical use.
- We completed our annual safety audit, and we are compliant with all relevant regulations.
- Whānau visiting for recreational purposes were provided safety guidelines, particularly for hunting, firewood gathering and access throughfare activities.

Financial Performance

Despite economic fluctuations, we have sustained financial stability throughout the year. Key financial highlights include:

- **Livestock Sales:** Our cattle sales have performed well this financial year; this is due to higher carcass weights. This has helped offset the lower per-head prices for sheep, which experienced their lowest returns in 30 years.
- **Wool Revenue:** Wool sales increased this year, driven by improved prices and the quality of the wool supplied.
- **Operational Costs:** We carefully managed expenses, concentrating on reducing unnecessary costs while investing in long-term infrastructure improvements.



We continue to monitor market trends closely, ensuring we position ourselves for profitability while safeguarding against future risks.

Kaimahi Acknowledgment

The heart of Ōtakanini Tōpū is our dedicated kaimahi. Their hard work, resilience, and expertise are critical to our farm's success. This year we:

- Expanded training and opportunities for kaimahi, helping them grow professionally while contributing to farm productivity.
- Recognised the exceptional work of individuals, whose efforts ensured the farm met its targets, often in challenging conditions.
- Explored and implemented well-being initiatives to support kaimahi in balancing the demands of farm work with their personal lives.

I would like to make a special mention of Connie Povey, who retired during my tenure as Interim Farm Manager. Connie has made significant contributions to Ōtakanini Tōpū over many decades, and I would like to personally thank her for the short time we worked together. I wish her well and all the best for her future endeavours.

Our kaimahi's commitment to best practice, professionalism, and teamwork remains central to our success. We will continue to support their growth and well-being as we move forward together.

Shareholder and Whānau Engagement

As kaitiaki of this whenua, your engagement and support are essential. We value the relationships we have cultivated with shareholders and their whānau. Highlights from this year's engagements include:

- Access Throughfare weekends
- Hunting activity weekends
- Firewood collection weekends
- Casual kaimahi opportunities for whanau

With safety protocols in place to ensure all activities were conducted safely.

We aim to strengthen the bond between our whenua, shareholders, whānau and kaimahi by engaging in sustainable practices together, inviting whānau to participate in future planting and conservation initiatives.

Challenges and Risk Management

The main challenges we faced this year for farming included:

Market Fluctuations: Prices per kilogram for sheep declined significantly this year, creating financial challenges. Holding lambs to higher weights before selling helped mitigate the impact on farming income.

Cattle Prices: The price per kilogram for cattle remained low throughout the year; however, finishing cattle to achieve good carcass weights, along with an increased number of cattle sold, helped offset the lower per-kilogram price.

Future Outlook

Our future is bright, and we are excited about the plans for the up-and-coming year. Our key goals include:

- Sustaining strong stock performance, with an emphasis on achieving even better lambing and calving rates while maintaining our high carcass weight targets.
- Expanding environmental initiatives, with planting, fencing sites of significance, and a continued focus on sustainable land management.
- Increasing shareholder and whānau engagement through additional access days and recreational opportunities, reinforcing our shared connection to the whenua.

In closing, I extend my heartfelt thanks to all shareholders, whānau, kaimahi and the committee of management. Our collective efforts are what make Ōtakanini Tōpū great. Your ongoing support, whether through farm operations, whānau engagement, or governance, is what ensures the continued prosperity of the Tōpū for future generations.

Ngā mihi
Jeff Bradly



Farm Manager

COMMITTEE OF MANAGEMENT'S ANNUAL PLAN

1 JULY 2024 – 30 JUNE 2025

Goal	Objective	Activity	KPI	Timeline
Governance & Leadership	Strengthen governance & leadership structures.	• Conduct a mid-year review of contingency plans.	Mid-year review completed.	3Q
		• Hold bi-annual strategic plan review sessions for continuous improvement.	Strategic Plan sessions held.	1Q
Roles & Responsibilities	Maintain a well-resourced & equipped Committee of Management	• Hold annual governance training sessions for committee members.	Training sessions held.	3Q
		• Carry out H&S review and training.		2Q
Shareholders & Whānau Engagement	Enhance engagement and communication with shareholders	• Carry out a shareholder satisfaction survey to gather feedback and improve engagement.	Survey conducted.	4Q & ongoing
		• Plan and hold two annual events for shareholders.	Two events held.	3Q/4Q
Te Taiao	Promote sustainable environmental practices	• 3 targeted taiao projects (rollover to completion) including fencing off of Tarawera maunga.	Completed 3 taiao projects.	2Q & ongoing.
		• Implement initiatives for environmental protection including pest control.	Pest control initiatives in place.	2Q & ongoing
Farm Operations	Optimise farm operations for sustainability and productivity	<ul style="list-style-type: none"> • Improve and maintain farm infrastructure. • Enhance livestock quality and welfare. • Conduct regular farm audits to ensure compliance. • Adhere to current Stock Policy (seasonal) using best practice. 	Bi-monthly updates provided to the Committee. Provision of clear reporting to the Committee through monthly farm reporting.	1Q & ongoing
Kaimahi Development	Promote continuous learning and professional growth opportunities among kaimahi.	• Upskill in training for professional development including First Aid, H&S, Ag Chem certification.	Training completed with certification	2Q & 4Q
		• Develop Individual Development Plans for kaimahi to record and monitor upskilling.	IDP established for individual kaimahi.	2Q & 4Q
		• Conduct at least 1 team-building activity for kaimahi cohesion.	Activity completed.	2Q or 3Q

ANNUAL FARM PLAN 2024 – JUNE 2025

Season	Objectives	Key Actions	Outcomes/Targets
Winter (July – August 2024) 1Q	Sheep Lambing	<ul style="list-style-type: none"> Support lambing conditions for 4000 Romney breeding ewes 	<ul style="list-style-type: none"> Achieve target lambing percentage of 140%
	Calf Management	<ul style="list-style-type: none"> Monitor 550 Angus cows for calving health. Complete calf marking by end of September. 	<ul style="list-style-type: none"> 90% calving percentage target
Spring (September – October 2024) 1Q & 2Q	Pasture Management	<ul style="list-style-type: none"> Maximise pasture growth during favourable conditions for sheep and cattle. Optimise feed management in preparation for fattening season. 	<ul style="list-style-type: none"> Livestock health and preparation for optimal fattening.
Summer (November 2024 – January 2025) 2Q & 3Q	Sheep weaning and sale	<ul style="list-style-type: none"> Wean lambs by late October. Target lamb carcass weight of 18kg for sales. Carry out post weaning shearing in November 	<ul style="list-style-type: none"> Maximise wool sales based on market conditions.
	Cattle breeding preparation	<ul style="list-style-type: none"> Prepare cattle for mating in October. Ensure bulls are sourced and ready for 1st October 	<ul style="list-style-type: none"> Ensure readiness for next breeding cycle.
	Sheep mating preparation	<ul style="list-style-type: none"> Prepare Romney ewes for mating in February. Ensure rams are in place (1 ram per 80 terminal ewes, 1 ram per 70 maternal ewes) 	<ul style="list-style-type: none"> Effective mating preparation for 2025 lambing season.
Autumn (February – March 2025) 3Q	Cattle weaning	<ul style="list-style-type: none"> Wean calves by 1st March 2025, ensuring calf health for the next production cycle. 	<ul style="list-style-type: none"> Ready calves for market and production.

Year Round Objectives 2Q and ongoing	Te Taiao (Environmental Sustainability)	<ul style="list-style-type: none"> • Complete 3 targeted environmental protection projects. • Implement pest control and other initiatives for environmental protection. 	<ul style="list-style-type: none"> • Promote sustainable environmental practices aligned with the overarching Annual Plan and Values of the incorporation.
1Q and ongoing	Farm Operations	<ul style="list-style-type: none"> • Improve and maintain farm infrastructure. • Improve livestock quality and welfare by adhering to stock policy and applying best practice. • Carry out regular farm audits to ensure compliance is being met. 	<ul style="list-style-type: none"> • Improve infrastructure, productivity and compliance.
2Q & 4Q	Kaimahi Development	<ul style="list-style-type: none"> • Upskill kaimahi in professional development training (First Aid, H&S, Ag Chem). • Develop individual development plans. • Explore and carry out at least 1 team building activity per annum. 	<ul style="list-style-type: none"> • Continuous learning and growth of kaimahi. • Stronger kaimahi team dynamics



VISION

**Ōtakanini Tōpū thriving prosperity for
the benefit of shareholders
and their whānau**

MISSION

**Commitment to be a progressive sheep,
beef and forest operation, always striving to
improve on past performance
in a forward-thinking manner,
using best practice**

NGĀ UARA

OUR COMMITMENT REFLECTS THE ESSENCE OF OUR VALUES

Demonstrating **C**ompassion for both the well-being of livestock and the environment

Seeking ways to **O**ptimise productivity and sustainability

Fostering a **M**otivated and dedicated team

Effective and responsible **M**anagement of resources and operations in the Incorporation

Embracing **I**nnovative approaches to improve processes, animal care, and forest management

Encouraging collaboration and **T**eamwork among Governance and Operations

Demonstrating **M**aturity in decision-making and actions, ensuring a balanced and responsible approach

Empowering kaimahi to take ownership of their roles and responsibilities

Creating an environment that **N**urtures the growth of both livestock and forest

Maintaining open and **T**ransparent communication with shareholders and their whānau

ŌTAKANINI TŌPŪ INCORPORATION

FINANCIAL STATEMENTS



WITHERS & CO LTD



CHARTERED ACCOUNTANTS
AUSTRALIA & NEW ZEALAND

Otakanini Topu Inc
Special Purpose Financial Statements
For the Year Ended 30 June 2024

Otakanini Topu Inc
Financial Statements
For the Year Ended 30 June 2024



WITHERS & CO LTD



CHARTERED ACCOUNTANTS
AUSTRALIA & NEW ZEALAND

<i>Contents</i>	<i>Page</i>
Directory	1
Approval of Financial Report	2
Statement of Financial Performance	3
Farm Working Account	4
Trading Account - Beef Cattle	7
Trading Account - Sheep	8
Statement of Financial Position	9
Statement of Movements in Equity	10
Fixed Asset and Depreciation Schedule	11
Notes to the Special Purpose Financial Statements	14
Notes to the Special Purpose Financial Statements - Undrawn Dividends	15
Taxable Income Reconciliation	17
Independent Auditors Report	18

Otakanini Topu Inc
Directory
As at 30 June 2024



WITHERS & CO LTD

CHARTERED ACCOUNTANTS
INCORPORATED IN NEW ZEALAND**Committee**

Trisya Hemana - Chair
Jeffrey Bradly
Michelle Hill
Marama Stead
Rihari Wilson
Gary Brown
Florence Te Ohaere

IRD Number

010-602-335

Business Location

405 South Head Road
RD1
HELENSVILLE

Nature Of Business

Sheep & Cattle Farming, Forestry, Investments

Auditor

HLB Mann Judd Limited
Level 8
57 Symonds Street
AUCKLAND

Accountant

Withers & Co Ltd
21 Neville Street
WARKWORTH

Banker

Bank of New Zealand



The accompanying notes form part of these Special Purpose Financial Statements. These Special Purpose Financial Statements should be read in conjunction with the attached Independent Auditor's Report.

Otakanini Topu Inc
Approval of Financial Report
For the Year Ended 30 June 2024



WITHERS & CO LTD



The Committee presents the approved financial report including the historical financial statements of Otakanini Topu Inc for the year ended 30 June 2024.

For and on behalf of the Committee

Trisya Hemana
Chair

Date: 21/10/2024

Michelle Hill
Committee Member

Date: 21/10/2024



The accompanying notes form part of these Special Purpose Financial Statements. These Special Purpose Financial Statements should be read in conjunction with the attached Independent Auditor's Report.

Otakanini Topu Inc
Statement of Financial Performance
For the Year Ended 30 June 2024



WITHERS & CO LTD



CHARTERED ACCOUNTANTS
AUSTRALIA & NEW ZEALAND

	2024 \$	2023 \$
Revenue Was Received From		
Net Farming Income	95,539	300,026
Sundry Income		
Interest - BNZ	177,071	58,110
Net Income Before Tax	<u>272,610</u>	<u>358,136</u>
Provision for Taxation	29,503	61,990
Net Income	<u><u>243,107</u></u>	<u><u>296,146</u></u>



The accompanying notes form part of these Special Purpose Financial Statements. These Special Purpose Financial Statements should be read in conjunction with the attached Independent Auditor's Report.

Otakanini Topu Inc
Farm Working Account
For the Year Ended 30 June 2024



WITHERS & CO LTD



	2024 \$	2023 \$
Farm Income		
Sheep	533,501	885,313
Cattle	536,105	725,836
	1,069,606	1,611,149
Wool Sales	46,528	27,213
	1,116,134	1,638,362
Sundry Income		
Cartage & Access Fees	158,753	13,464
Grants Received	8,000	(4,905)
MPI Cyclone Recovery	-	8,696
Rent - Employees Houses	33,300	56,000
Rent Received - Farm Houses	30,053	19,760
Rebates	386	6,487
	230,492	99,502
Gross Farming Income	1,346,626	1,737,864



The accompanying notes form part of these Special Purpose Financial Statements. These Special Purpose Financial Statements should be read in conjunction with the attached Independent Auditor's Report.

Otakanini Topu Inc
Farm Working Account
For the Year Ended 30 June 2024



WITHERS & CO LTD

CHARTERED ACCOUNTANTS
AUSTRIA & NEW ZEALAND

	2024 \$	2023 \$
Farm Working		
Cropping & Cultivation	6,885	-
Dips & Sprays	17,945	19,768
Dog Food etc	14,389	19,191
Eartags	2,455	13,661
Electricity	14,288	17,038
Fertiliser	41,648	105,377
Nitrogen Fertilizer	13,931	28,953
Freight	23,480	8,243
Pregnancy Testing	8,984	6,168
Harvesting - Silage & Hay	4,015	8,311
Harvesting Crops	-	19,453
Cartage & Spreading	16,978	25,612
Rations	-	466
Pasture, Regrassing	20,105	16,112
Shearing Expenses	1,990	3,357
Soil Testing	-	372
Shearing Contracts	80,854	113,218
Shelter Trees & Hedging	3,100	-
Veterinary	38,067	50,549
Wages	344,565	458,581
Staff Allowances, Training	2,779	4,513
Subcontractors	10,238	-
Contract Farm Manager	71,597	-
Weed & Pest Control	9,829	12,323
	748,122	931,266
Vehicles		
Fuel & Oil	31,651	30,575
Excavator	-	3,425
Tractor	7,619	526
Trailer	704	-
Hilux, Utes	1,630	4,675
Motor Bike	41,014	33,657
	82,618	72,858
Repairs & Maintenance		
Workers Dwelling	26,472	7,667
Buildings	-	12,396
Rented House	2,444	-
Drainage	1,669	-
Tools & Hardware	2,167	1,948
Fences & Gates	26,400	16,349
General	75	34
Roads, Yards & Gateways	22,742	2,000
Plant & Machinery	7,782	3,513
Protective Clothing	1,121	1,347
Water Supply	4,117	12,315
	94,989	57,569



The accompanying notes form part of these Special Purpose Financial Statements. These Special Purpose Financial Statements should be read in conjunction with the attached Independent Auditor's Report.

Otakanini Topu Inc
Farm Working Account
For the Year Ended 30 June 2024



WITHERS & CO LTD



CHARTERED ACCOUNTANTS
AUTUMN / SEPTEMBER

	2024 \$	2023 \$
Administration		
Audit Fees	7,335	11,200
Accountancy	20,693	15,500
Secretarial Wages	11,604	7,610
Secretarial	-	9,354
Computer Expenses	27	78
Stock Audit	2,413	2,576
Forestry Valuation	-	6,586
Staff Expenses	1,504	5,483
Farm Advisory	4,900	-
AGM Costs, Election	11,325	12,195
General & Bank Charges	614	626
Management Committee Fees	24,200	5,054
Management Committee Expenses	1,283	10,968
Mini Storage Expenses	1,673	1,802
Legal Fees	6,206	5,397
Koha	2,000	1,000
Subscriptions	5,677	8,466
Stationery & Postage, Office	1,738	1,233
Telephone & Internet	6,906	10,193
	110,098	115,321
Standing Charges		
ACC Levies	9,307	6,424
Insurance	55,421	58,667
Rates	28,180	29,684
Lease - Makarau	29,912	49,269
	122,820	144,044
Total Cash Expenses	1,158,647	1,321,058
Depreciation		
Depreciation as per Schedule	92,109	111,735
Depreciation - Loss on Sale	1,744	5,045
Depreciation Recovered	(1,413)	-
	92,440	116,780
Total Expenses	1,251,087	1,437,838
Net Farming Income	95,539	300,026



The accompanying notes form part of these Special Purpose Financial Statements. These Special Purpose Financial Statements should be read in conjunction with the attached Independent Auditor's Report.

Otakanini Topu Inc
Beef Cattle Trading Account
For the Year Ended 30 June 2024



WITHERS & CO LTD



	2024 No.	Ave Price	2024 \$	2023 \$
Sales				
Cows	80	1,184.08	94,726	30,328
R2yr Steers	330	1,753.43	578,631	605,212
R2,3yr Heifers	65	1,404.17	91,271	34,006
R2yr/R3yr Bulls	16	2,097.50	33,560	134,030
	491	1,625.64	798,188	803,576
Purchases				
Cows	56	1,417.91	79,403	-
R3yr Heifers	11	1,350.00	14,850	-
R2yr Steers	291	1,365.98	397,500	162,810
Breeding Bulls	9	4,211.11	37,900	20,200
	367	1,443.20	529,653	183,010
Deaths & Missing	(10)		-	-
Net Cash Surplus	134		268,535	620,566
Less Opening Stock				
Rising Two Year Heifers (HS)	129	1,145.00	147,705	107,229
R2yr Steers (NSC)	159	1,085.35	172,571	363,564
Mixed Age Cows (HS)	383	1,304.00	499,432	422,878
R1yr Heifers (NSC)	184	495.30	91,135	53,345
R1yr Steers (NSC)	202	495.30	100,051	39,412
R2yr Bulls (NSC)	-	-	-	53,815
R3yr Bulls (NSC)	83	1,299.82	107,885	-
Breeding Bulls (HS)	16	2,898.00	46,368	42,636
	1,156	1,007.91	1,165,147	1,082,879
Plus Closing Stock				
R2yr Heifers (HS)	155	1,145.00	177,475	148,737
R2yr Steers (NSC)	390	1,121.01	437,194	172,571
Cows (HS)	447	1,304.00	582,888	510,922
R1yr Heifers (NSC)	206	476.30	98,118	91,135
R1yr Steers (NSC)	185	476.30	88,116	100,051
R3yr Steers/ Bulls (NSC)	-	-	-	107,885
Bulls (HS)	17	2,878.00	48,926	56,848
	1,400	1,023.37	1,432,717	1,188,149
Gross Profit From Cattle Trading	378		536,105	725,836



The accompanying notes form part of these Special Purpose Financial Statements. These Special Purpose Financial Statements should be read in conjunction with the attached Independent Auditor's Report.

Otakanini Topu Inc
Sheep Trading Account
For the Year Ended 30 June 2024



WITHERS & CO LTD



CHARTERED ACCOUNTANTS
 AUSTRALIA / NEW ZEALAND

	2024 No.	Ave Price	2024 \$	2023 \$
Sales				
5+yr Ewes	1,941	55.33	107,393	3,675
2th Ewes	61	58.31	3,557	3,675
Trade Hoggets	-	-	-	7,350
Ewe Lambs	-	-	-	47,391
Trade Lambs	4,242	121.47	515,272	371,363
Store Lambs	1,440	98.38	141,668	290,414
	7,684	99.93	767,890	723,868
Purchases				
Ewes	387	110.00	42,570	-
Breeding Rams	55	816.36	44,900	14,500
4ths	231	110.00	25,410	-
	673	167.73	112,880	14,500
Deaths & Missing	(562)	-	-	-
Net Cash Surplus	7,573		655,010	709,368
Less Opening Stock				
Two Tooth Ewes (HS)	1,341	159.00	213,219	223,860
MA Ewes (HS)	4,078	134.00	546,452	198,771
Wethers (NSC)	-	-	-	2,129
5+ Yr Ewes (HS)	829	106.00	87,874	490,320
Lambs (NSC)	983	47.50	46,692	73,986
Breeding Rams (HS)	94	309.00	29,046	32,736
	7,325	126.05	923,283	1,021,802
Plus Closing Stock				
2th Ewes (HS)	1,551	159.00	246,609	274,905
MA Ewes (HS)	2,879	134.00	385,786	721,806
5+ Yr Ewes (HS)	-	-	-	119,376
Lambs (NSC)	3,274	45.60	149,294	46,692
Breeding Rams (HS)	65	309.00	20,085	34,968
	7,769	103.20	801,774	1,197,747
Gross Profit From Sheep Trading	8,017		533,501	885,313



The accompanying notes form part of these Special Purpose Financial Statements. These Special Purpose Financial Statements should be read in conjunction with the attached Independent Auditor's Report.

Otakanini Topu Inc
Statement of Financial Position
As at 30 June 2024



WITHERS & CO LTD



	Note	2024 \$	2023 \$
Current Assets			
BNZ Farm First Call Account		336,831	688,983
ASB		15	15
Taxation		28,689	-
Cattle Proceeds Due		38,786	64,835
Sundry Debtors		39,668	-
Sheep Proceeds Due		40,208	85,642
Wool Proceeds Due		-	240
Wool on Hand		9,899	-
		<u>494,096</u>	<u>839,715</u>
Livestock			
Sheep on Hand		801,774	1,197,747
Beef Cattle on Hand		1,432,717	1,188,149
		<u>2,234,491</u>	<u>2,385,896</u>
Investments			
Shares		93,526	85,715
Term Deposits		2,353,906	2,020,581
		<u>2,447,432</u>	<u>2,106,296</u>
Fixed Assets			
Land		17,379,900	17,379,900
Buildings		127,135	133,108
Motor Vehicles		280,664	334,726
Development		158,553	161,471
Furniture & Fittings		47,764	55,694
Plant & Equipment		86,596	97,279
		<u>18,080,612</u>	<u>18,162,178</u>
Total Assets		<u>23,256,631</u>	<u>23,494,085</u>
Current Liabilities			
Business Visa		695	1,017
GST Due for Payment		16,939	85,152
Taxation		-	51,822
Accounts Payable		99,434	73,834
Prepayments		-	27,203
Employee Entitlements		20,119	28,276
Other Current Liabilities		797,870	694,817
		<u>935,057</u>	<u>962,121</u>
Total Liabilities		<u>935,057</u>	<u>962,121</u>
Excess Assets Over Liabilities		<u>22,321,574</u>	<u>22,531,964</u>
Represented by:			
Equity			
Issued Capital		190,507	190,507
Land Revaluation Reserve		17,163,707	17,163,707
Asset Revaluation Reserve		7,425	-
Realised Capital Reserves		127,410	127,309
Livestock Revaluation Reserve		2,016,920	2,314,386
Revenue Reserves		2,815,605	2,736,055
Total Equity		<u>22,321,574</u>	<u>22,531,964</u>



The accompanying notes form part of these Special Purpose Financial Statements. These Special Purpose Financial Statements should be read in conjunction with the attached Independent Auditor's Report.

Otakanini Topu Inc
Statement of Movements in Equity
For the Year Ended 30 June 2024



WITHERS & CO LTD



	<i>Note</i>	2024 \$	2023 \$
Equity At 1 July 2023		22,531,964	22,377,320
Surplus & Revaluations			
Net Surplus after Tax		243,107	296,146
Movements in Realised Capital Reserves		7,526	-
Movements in Unrealised Capital Reserves		(297,466)	(141,502)
Total Recognised Revenues & Expenses		<u>(46,833)</u>	<u>154,644</u>
Other Movements			
Distribution to Owners		(163,557)	-
Equity At 30 June 2024		<u><u>22,321,574</u></u>	<u><u>22,531,964</u></u>



The accompanying notes form part of these Special Purpose Financial Statements. These Special Purpose Financial Statements should be read in conjunction with the attached Independent Auditor's Report.

Otakanini Topu Inc

Fixed Assets and Depreciation Schedule

For the Year Ended 30 June 2024



WITHERS & CO LTD



Asset	Cost Price	Book Value 01/07/23	Additions Disposals	Gain/Loss on Disposal	Capital Profit	-- Depreciation -- Mth	Rate	\$	Accum Deprec 30/06/24	Book Value 30/06/24
Assets										
Vehicles - Southhead Tractor -										
New Holland T6070 2020 Can	128,460	24,456				12	13.0% DV	3,179	107,183	21,277
Am SSV Defender Excavator	23,217	7,764				12	30.0% DV	2,329	17,782	5,435
Hyundai	137,533	29,664				12	--		107,869	29,664
Quad - Can Am Outlander 500	13,400	265	0	(265)			30.0% DV			0
2015 Can Am Outlander 500	12,870	723	0	(723)			30.0% DV			0
Front End Loader MXT12 2016	16,460	3,249				12	13.0% DV	422	13,633	2,827
Can Am Defender 800 Toyota	19,956	1,644				12	30.0% DV	493	18,805	1,151
Hilux	45,700	8,504				12	30.0% DV	2,551	39,747	5,953
2018 Can Am Defender	20,000	3,722				12	30.0% DV	1,117	17,395	2,605
Can Am Defender HD8XU	23,982	13,010				12	30.0% DV	3,903	14,875	9,107
Tractor - Puma 195 50hp Toyota	202,800	176,436				12	13.0% DV	22,937	49,301	153,499
Hilux SR 2020 Suzuki Carry	43,043	34,434				12	20.0% DV	6,887	15,496	27,547
2013	16,500	11,550				12	30.0% DV	3,465	8,415	8,085
2021 Can Am	26,626	19,304				12	30.0% DV	5,791	13,113	13,513
Sub-Total	730,547	334,726	0	(988)				53,074	423,614	280,663
Plant & Equipment - Sth Head										
Weather Station	2,802	635				12	13.0% DV	83	2,250	552
Calf Puller	600	137				12	13.0% DV	18	481	119
Hing Hit Post Driver Fertilizer	16,355	2,555				12	16.0% DV	409	14,209	2,146
Spreader	2,767	478				12	16.0% DV	76	2,365	402
Fence Stapler	1,140	37				12	14.4% DV	5	1,108	32
Croplands 1000L Sprayer	15,964	2,033				12	16.0% DV	325	14,256	1,708
Digger Spade Bucket	783	161				12	13.0% DV	21	644	140
Water Tank	2,848	402				12	16.0% DV	64	2,510	338
Fridge - Shearers Quarters	356	14				12	12.0% DV	2	344	12
Waste Not Feeder	872	80				12	15.6% DV	12	804	68
Waste Not Feeder	872	80				12	15.6% DV	12	804	68
Grass Trimmer	427	13	0	(13)			10.0% DV			0
Slasher Vogel 3000	7,991	149	0	(149)			18.0% DV			0
Silage Wagon - Uni Side Feed	29,000	2,130				12	15.6% DV	332	27,202	1,798
Anderson 605 Pump and Motor	13,665	847				12	15.6% DV	132	12,950	715
Pump & Motor	1,767	47				12	14.4% DV	7	1,727	40
Cattle Weigh Platform	667	21				12	14.4% DV	3	649	18
Bike Trailer	2,176	69				12	14.4% DV	10	2,117	59
Autodraft Cattle Scales	23,750	5,022				12	13.0% DV	653	19,381	4,369
Loadbars 3000 Kg HD1010	1,735	371				12	13.0% DV	48	1,412	323
Shearing Gear	8,345	94				12	10.0% DV	9	8,260	85
Mobile Sheep Yards, Prattley	9,268	151				12	10.0% DV	15	9,132	136
Prattley Sheep Race	814	18				12	10.0% DV	2	798	16
Spray Tank & Boom	13,472	209				12	18.0% DV	38	13,301	171
Quick Hitch, Foam Markers	3,382	52				12	18.0% DV	9	3,339	43
Post Hole Borer	1,021	9				12	21.6% DV	2	1,014	7
Grader Blade	1,500	83				12	12.0% DV	10	1,427	73
Weigh Scale Indicator Harrows	1,735	501				12	13.0% DV	65	1,299	436
Cambridge Roller	3,712	128				12	14.0% DV	18	3,602	110
Scales & Load Bars	1,500	99				12	12.0% DV	12	1,413	87
Prattley 3 Way Crate	3,387	369				12	15.6% DV	58	3,076	311
Hay Feeder	9,355	1,018				12	15.6% DV	159	8,496	859
EID Panel Reader	9,055	300				12	14.4% DV	43	8,798	257
Big Bale Grab	1,995	426				12	13.0% DV	55	1,624	371
EID Stick Reader	2,140	54				12	10.0% DV	5	2,091	49
Slasher	1,056	236				12	13.0% DV	31	851	205
Website Design	8,250	67				12	18.0% DV	12	8,195	55
Stove	1,090	6	0	(6)			50.0% DV			0
MX BR200 DGS Bucket	1,067	36				12	10.0% DV	4	1,035	32
1 Pearson Silage Grab	2,540	489				12	13.0% DV	64	2,115	425
Trailer	2,885	43				12	14.4% DV	6	2,848	37
Garmin GPS	1,423	25				12	14.4% DV	4	1,402	21
10T Trailer	661					12	48.0% DV		661	0
Grundfos Pump	14,300	860				12	14.4% DV	124	13,564	736
Brother MFC Printer	4,609	703				12	18.0% DV	127	4,033	576
Trailer Cages (2)	521	1	0	(1)			50.0% DV			0
Water Tank 30000 Ltr	822	231				12	13.0% DV	30	621	201
Stove - Workers Dwelling	3,229	468				12	16.0% DV	75	2,836	393
Silage Wagon Scales	1,000	61				12	20.0% DV	12	951	49
Plate Meter	13,893	5,437				12	13.0% DV	707	9,163	4,730
Belt Drive Compressor Docking	838	331				12	13.0% DV	43	550	288
Iron	2,141	764				12	16.0% DV	122	1,499	642
Handpiece	713	368				12	13.0% DV	48	393	320
Chainsaw	600	162				12	25.0% DV	41	479	121
Dog Kennel & Run (4)	800	9	0	(9)			67.0% DV			0
Water Pump - Employee House	6,793	821				12	40.0% DV	328	6,300	493
	1,890	1,090				12	16.0% DV	174	974	916

The accompanying notes form part of these Special Purpose Financial Statements. These Special Purpose Financial Statements should be read in conjunction with the attached Independent Auditor's Report.



WITHERS & CO LTD



CHARTERED ACCOUNTANTS
AUSTIN & NEW ZEALAND

Otakanini Topu Inc

Fixed Assets and Depreciation Schedule For the Year Ended 30 June 2024

Asset	Cost Price	Book Value 01/07/23	Additions Disposals	Gain/Loss on Disposal	Capital Profit	-- Depreciation -- Mth Rate	\$	Accum Deprec 30/06/24	Book Value 30/06/24
50 Teat Calf Feeder	3,824	2,145				12	16.0% DV	343	1,802
Dog Kennels - Double (2)	3,200	438				12	40.0% DV	175	263
Dog Kennels - Triple	2,400	328				12	40.0% DV	131	197
Samsung Galaxy	1,309	129	0	(129)			50.0% DV		0
Farmblazer Compressor	1,821	1,050				12	16.0% DV	168	882
Spray Unit, Boom	3,245	52	0	(52)			18.0% DV		0
Lincoln Sheep Jetter, including	7,818	5,516				12	16.0% DV	883	4,633
Samsung Galaxy S21 -	1,565	456				12	50.0% DV	228	228
Vigolo Raptor 250 DT Mulcher	28,500	21,067				12	16.0% DV	3,371	17,696
Wool Press	15,348	11,517				12	16.0% DV	1,843	9,674
Grundfos Main Farm Pump	5,459	5,459				12	DV		5,459
Tank Water Max Mist Green	3,615	2,915				12	16.0% DV	466	2,449
Honda 5.5 HP Pump	1,350	1,013				12	16.0% DV	162	851
Quitch 32mm	2,350	2,068				12	16.0% DV	331	1,737
Staple Gun	1,274	705				12	67.0% DV	472	233
Husqvarna Chainsaw	1,102	917				12	67.0% DV	614	303
Computer Monitor	1,799	1,049				12	50.0% DV	525	524
Grundfos Submersible Pump	1,800	1,584				12	16.0% DV	253	1,331
Water Pressure Tank H90	3,500	3,220				12	16.0% DV	515	2,705
Post Holer Borer			1,304			1	40.0% DV	43	1,261
Weigh Scale Indicator XR5000			3,000			1	25.0% DV	62	2,938
Security Camera (Reolink Go			1,136			5	20.0% DV	95	1,041
Sub-Total	359,618	92,627	5,439	(359)				15,344	267,311
Plant & Equipment - Maka									
Sewage System	4,000	2,520				12	5.0% DV	126	2,394
Calf Feeder	1,739	344				12	16.0% DV	55	289
Trailer	4,208	1,150				12	13.0% DV	150	1,000
Calf Feeders	998	200				12	16.0% DV	32	168
Colostrum Tank	1,518	438				12	13.0% DV	57	381
Sub-Total	12,463	4,652	0					420	4,232
Development - Southhead									
Silage Pit	11,528	379				12	12.5% DV	47	332
Water Bore	16,693	4,021				12	6.0% DV	241	3,780
Power Supply	918	42				12	12.5% DV	5	37
Water Tank	2,000	24				12	18.0% DV	4	20
Water Tank	3,300	48				12	18.0% DV	9	39
Water Supply	29,948	14,253				12	6.0% DV	855	13,398
Water Supply	8,810	4,459				12	6.0% DV	268	4,191
Water Supply	36,718	21,984				12	5.0% DV	1,099	20,885
Water Supply	5,847	3,685				12	5.0% DV	184	3,501
Water Supply	59,683	26,701				12	6.0% DV	1,602	25,099
Cattle Yards	9,863	4,718				12	10.0% DV	472	4,246
Te Pari SY86 Stockyard &	28,995	19,022				12	10.0% DV	1,902	17,120
Te Pari Custom Force Pen &	13,800	9,054				12	10.0% DV	905	8,149
Te Pari Classic Vetless Crush	9,500	6,925				12	10.0% DV	693	6,232
Power Supply - Tarawera Road	1,500	1,093				12	10.0% DV	109	984
Water Supply	14,444	12,384				12	5.0% DV	619	11,765
Cattle Yards	24,118	17,582				12	10.0% DV	1,758	15,824
Cattle Yards - Sheep Ramp	4,695	3,423				12	10.0% DV	342	3,081
Cattle Yards - Cattle Ramp	4,850	4,158				12	5.0% DV	208	3,950
Water Tanks 30,000 litres (3)	10,844	7,291				12	18.0% DV	1,312	5,979
Water Tank (122 Tarawera Rd)			7,499			6	16.0% DV	600	6,899
Bore Pump			3,651			10	20.0% DV	609	3,042
Sub-Total	298,054	161,246	11,150					13,843	150,651
Development - Makarau									
Pump System	1,638	225	(1,739)	1,413	101		18.0% DV		0
Furniture & Fittings									
Fire Place - Managers House	4,005	1,246				12	10.0% DV	125	1,121
Carpet - Stock Managers	5,600	653				12	40.0% DV	261	392
Oven - Witai & Connie's	2,704	1,563				12	25.0% DV	391	1,172
2 x Ovens - Shearers Quarters	880	719				12	10.0% DV	72	647
Carpet - 405 South Head RD	12,750	7,371				12	25.0% DV	1,843	5,528
Oven - Lee's House South	1,382	799				12	25.0% DV	200	599
Vinyl Flooring 405 South Head	3,125	1,807				12	25.0% DV	452	1,355
Blinds - 405 South Head Road	4,983	2,881				12	25.0% DV	720	2,161
Blinds - 451A South Head Rd	3,224	2,708				12	10.0% DV	271	2,437
Fireplace - 741 South Head	5,301	4,651				12	10.0% DV	465	4,186
Heat Pump 405 South Head Rd	9,133	8,014				12	10.0% DV	801	7,213
Heat Pump 122 Tarawera Rd	7,704	6,760				12	10.0% DV	676	6,084
Heat Pump 541A South Head	6,891	6,047				12	10.0% DV	605	5,442
Heat Pump 541 South Head Rd	5,937	5,210				12	10.0% DV	521	4,689
Heat Pump 741 South Head Rd	6,001	5,266				12	10.0% DV	527	4,739

The accompanying notes form part of these Special Purpose Financial Statements. These Special Purpose Financial Statements should be read in conjunction with the attached Independent Auditor's Report.



Otakanini Topu Inc

Fixed Assets and Depreciation Schedule For the Year Ended 30 June 2024



WITHERS & CO LTD

CHARTERED ACCOUNTANTS
AUSTRIA & NEW ZEALAND

Asset	Cost Price	Book Value 01/07/23	Additions Disposals	Gain/Loss on Disposal	Capital Profit	-- Depreciation -- Mth Rate \$	Accum Deprec 30/06/24	Book Value 30/06/24
Sub-Total	79,619	55,694	0				7,930	47,764
Buildings - Southhead								
Fertilizer Bin	5,582					12 --	5,582	0
Killing House	3,161					12 2.5% SL%	3,161	0
Garage & Implement Shed	9,353					12 2.5% SL%	9,353	0
Storage Shed	17,468					12 2.5% SL%	17,468	0
Haybarn No 1	8,355	134				12 2.5% SL%	8,355	0
Shearers Quarters	18,625	220				12 2.5% SL%	18,625	0
Workshop	30,359	9,104				12 2.5% SL%	22,014	8,345
Woolshed	62,915	18,827				12 --	44,088	18,827
House No 1	30,552	4,528				12 --	26,024	4,528
Roof - Cattle Crush	4,534	2,946				12 5.0% SL%	227	1,815
Haybarn No 2	3,391					12 --	3,391	0
Haybarn No 3	6,324	865				12 2.5% SL%	5,617	707
House No 4 Additions	22,669	22,669				12 --		22,669
House No 4	108,352	69,340				12 --	39,012	69,340
House No 3	11,373					12 --	11,373	0
House No 2	5,970					12 --	5,970	0
Sub-Total	348,983	128,633	0				1,498	127,135
Buildings - Makarau								
Portacom	13,913	3,710	(3,478)	(232)		8.0% SL%		0
Container	2,100	765	(600)	(165)		7.0% SL%		0
Sub-Total	16,013	4,475	(4,078)	(397)				0
Land								
Land (2745.3409 Ha 2021 GV)	3,551,293	3,551,293				12 --		3,551,293
Plus Revaluation	10,000,000	10,000,000				12 --		10,000,000
Revaluation (2018)	2,800,000	2,800,000				12 --		2,800,000
Pine Trees	64,900	64,900				12 --		64,900
Revaluation (2022)	963,707	963,707				12 --		963,707
Sub-Total	17,379,900	17,379,900	0					17,379,900
Total Assets	19,226,835	18,162,177	10,772	(331)	101		92,109	1,103,510

HLB
MJ

The accompanying notes form part of these Special Purpose Financial Statements. These Special Purpose Financial Statements should be read in conjunction with the attached Independent Auditor's Report.

Otakanini Topu Inc
Notes to the Special Purpose Financial Statements
For the Year Ended 30 June 2024



1 Statement of Accounting Policies
 These are the special purpose financial statements of Ōtakanini Tōpū Inc Maori Authority registered under the Te Ture Whenua Maori Act 1993.

Basis Of Preparation

Ōtakanini Tōpū Inc is not considered "large" as defined for a Māori Incorporation, as total revenue does not exceed \$10 million.

These financial statements have been prepared in accordance with *A Special Purpose Financial Reporting Framework for use by For-Profit Entities (SPFR for FPEs)* published by Chartered Accountants Australia and New Zealand and have been prepared for:

- * Inland Revenue
- * Internal Management purposes

Measurement Base

These special purpose financial statements do not comply with generally accepted accounting practice. The special purpose financial statements of Ōtakanini Tōpū Inc have been prepared on an historical cost basis, except as noted otherwise below. The information is presented in New Zealand dollars and has been rounded to whole dollars, unless otherwise stated.

Changes in Accounting Policies

There have been no changes in accounting policies. All policies have been applied on a basis consistent with those used in the previous year.

(a) Revenue

Sales of goods and/or services are recognised when they have been delivered and accepted by the customer.
 Interest income is recognised using the cash basis method.

(b) Property, Plant & Equipment

The entity has the following classes of Property, Plant & Equipment;

- Land
- Buildings - Southhead
- Motor Vehicles - Southhead
- Development -Southhead
- Furniture & Fittings
- Plant & Equipment - Southhead
- Plant & Equipment - Makarau
- Development - Makarau
- Buildings - Makarau

Land and buildings have been revalued by \$13,763,707 to reflect 2021 Government Valuation Depreciation has been calculated in accordance with rates permitted under the Income Tax Act 2007.

(c) Goods & Services Tax

These special purpose financial statements have been prepared on a GST exclusive basis with the exception of accounts receivable and accounts payable which are shown inclusive of GST.

(d) Taxation

Income tax is accounted for using the taxes payable method. The income tax expense charged to the Statement of Financial Performance is the estimated tax payable in the current year, adjusted for any differences between the estimated and actual tax payable in prior years.



Otakanini Topu Inc
Notes to the Special Purpose Financial Statements
For the Year Ended 30 June 2024



WITHERS & CO LTD



(c) **Biological Assets**

Livestock has been valued in accordance with current Income Tax legislation at values as set out in the livestock trading accounts. No estimate of market values for livestock has been made.

(f) **Investments**

Share investments in listed and unlisted companies are stated at cost, as these holdings are integral to farming operations. Should the nature of these farming activities change, impairment indicators would be considered.

All Term Deposits are classified as Investments.

(g) **Receivables**

Receivables are stated at their estimated realisable value.

Bad debts are written off in the year in which they are identified.

2 Contingent Liabilities

Unclaimed Dividends

As defined in the Te Ture Whenua Māori Act 1993 Section 267 (1) unclaimed dividends means "dividends in the hands of the incorporation that have been held by it or by a preceding incorporation of body corporate (including the Maori Trustee) for at least 10 years without payment to the shareholder or other person entitled". In accordance with Section 267 (2) of the Act, the incorporation is required, within 12 months of the dividends becoming unclaimed to compile a list of the shareholders to whom those dividends are payable, setting out the amount of unclaimed dividends held for each shareholder and shall transmit the list to the Registrar of the Maori Land Court. The Incorporation is currently undertaking a review of the share register to determine the amount of unclaimed dividends to be provided to the Maori Land Court. The Incorporation carried out a review of Dividends paid from 1998 to 2002 to identify all unrepresented cheques, which have been written off. The total value of unrepresented cheques identified was \$41,362 but the review could result in amendment to this amount. Since 2002 a further \$59,464 unrepresented dividend cheques have been written off.

Grants Received

On 25 June 2024, Otakanini Tōpū Inc received the first of three payments associated with a grant agreement with Te Puni Kokiri. The first payment was \$8,000 plus GST and has been recognised in the financial accounts as Grants Received. The total grant is worth \$23,600 plus GST. These funds are only available to engage expertise to provide business advice and undertake a high-level feasibility study into the possibility of establishing a Bed and Breakfast, short-stay accommodation, venue hire, conference centre, or a combination of any of these on land owned by the Tōpū. The Committee have an obligation to provide reports and updates to Te Puni Kokiri to ensure that these funds are only used for these purposes. If the Committee fails to meet any of the obligations outlined in the Grant Agreement, then they may be required to repay the funds provided to them by Te Puni Kokiri.

3 Related Parties

There were no material transactions with any related parties during the year under review.

4 Securities and Guarantees

Bank of New Zealand have a registered security over all livestock.

5 Forestry

Forestry is recorded at cost \$64,900. It is estimated that the market value of the forest is \$4,668,321.

The forest is classified as a pre-1990 forest. Otakanini Tōpū Inc was issued 35,340 carbon units as part of the government agreement in relation to pre-1990 forests. These units will need to be surrendered on harvest should the forest not be replanted.



Otakanini Topu Inc
Notes to the Special Purpose Financial Statements
For the Year Ended 30 June 2024



WITHERS & CO LTD



6 **Future Capital Commitments**

There are no future capital commitments.

7 **Maori Authority Credit Account**

The balance of the Maori authority Credit Account at 31 March 2024 is \$301,171.02.

8 **Undrawn Dividends**

This represents dividends accrued for the years listed to those shareholders who cannot be located due to changed addresses or uncompleted succession.

	<i>2024</i>	<i>2024</i>
	<i>QTY</i>	<i>\$</i>
December 2005 @ \$1.00	32,734	32,734
December 2006 @ \$1.00	38,331	38,331
December 2010 (Net MAC) @ \$1.00	33,741	33,741
December 2011 (Net MAC) @ \$1.30	36,772	39,438
December 2012 (Net MAC) @ \$1.30	41,139	44,115
December 2013 (Net MAC) @ \$1.30	56,029	60,091
December 2014 (Net MAC) @ \$1.00	56,260	46,415
December 2015 (Net MAC) @ \$1.00	64,749	53,418
December 2016 (Net MAC) @ \$1.50	70,427	87,153
December 2017 (Net MAC) @ \$1.50	70,236	86,917
December 2018 (Net MAC) @ \$1.50	68,188	84,383
December 2019 (Net MAC) @ \$1.50	69,784	86,357
December 2023 (Net MAC) @ \$2.00	71,060	117,249
Unpresented Cheques Written Off (Now undrawn)	-	59,464
Less Prior Year Dividends Paid	-	(71,936)
	<u>709,450</u>	<u>797,870</u>

9 **COVID-19**

The Coronavirus/COVID-19 outbreak, which became a global pandemic, presents strategic and commercial uncertainties which remain today. Given the continued uncertainty worldwide with regards to COVID-19, it is not possible to quantify the subsequent financial impact on the entity and its future operations.

The risks that Ōtakanini Tōpū Inc are exposed to from COVID-19 include disruption to markets and supply chains.

10 **Subsequent Events**

No subsequent events occurred after balance date requiring disclosure within the financial statements (2023; nil).



Otakanini Topu Inc
Reconciliation of Taxable Income
For the Year Ended 30 June 2024



WITHERS & CO LTD



CHARTERED ACCOUNTANTS
 AUSTRALIA - NEW ZEALAND

	2024
	\$
Income as per accounts	272,610
Less	
Interest Received - April to June 2024	(95,859)
Opening Holiday Pay Accrual	(28,276)
Plus	
Closing Holiday Pay Accrual	20,119
	<u><u>168,594</u></u>



The accompanying notes form part of these Special Purpose Financial Statements. These Special Purpose Financial Statements should be read in conjunction with the attached Independent Auditor's Report.



INDEPENDENT AUDITOR'S REPORT

To the Shareholders of Otakanini Topu Incorporation

Opinion

We have audited the special purpose financial statements of Otakanini Topu Incorporation (the Entity) on pages 3 to 17, which comprise the Statement of Financial Position as at 30 June 2024, the statement of financial performance, the Farm working account, the Trading account – Beef cattle, the Trading account – Sheep, and the Statement of Movements in Equity for the year then ended, and notes to the special purpose financial statements, including a summary of significant accounting policies.

In our opinion, the accompanying special purpose financial statements present fairly, in all material respects, the financial position of Otakanini Topu Incorporation as at 30 June 2024, and its financial performance for the year then ended in accordance with the Special Purpose Financial Reporting Framework for use by For-Profit Entities as issued by Chartered Accountants Australia and New Zealand and the requirements of Te Ture Whenua Maori Act 1993.

Basis for Opinion

We conducted our audit in accordance with International Standards on Auditing (New Zealand) (ISAs (NZ)). Our responsibilities under those standards are further described in the Auditor's Responsibilities for the Audit of the Special Purpose Financial Statements section of our report. We are independent of Otakanini Topu Incorporation in accordance with Professional and Ethical Standard 1 International Code of Ethics for Assurance Practitioners (including International Independence Standards) (New Zealand) issued by the New Zealand Auditing and Assurance Standards Board, and we have fulfilled our other ethical responsibilities in accordance with these requirements. We believe that the audit evidence we have obtained is sufficient and appropriate to provide a basis for our opinion.

Other than in our capacity as auditor we have no relationship with, or interests in, Otakanini Topu Incorporation.

Emphasis of Matter – Basis of Accounting and Restriction on Distribution

We draw attention to Note 1 to the special purpose financial statements, which describes the basis of preparation. The special purpose financial statements are prepared for Inland Revenue and internal management purposes. As a result, the special purpose financial statements may not be suitable for another purpose. Our report is intended solely for the entity, executive committee and its shareholders and should not be distributed to or used by parties other than the entity, executive committee or its shareholders. Our opinion is not modified in respect of this matter.

Executive Committees' Responsibilities for the Special Purpose Financial Statements

The Executive Committee is responsible on behalf of the entity for the preparation and fair presentation of the special purpose financial statements in accordance with the Special Purpose Financial Reporting Framework for use by For-Profit Entities as issued by Chartered Accountants Australia and New Zealand and for such internal control as the Executive Committee determines is necessary to enable the preparation of special purpose financial statements that are free from material misstatement, whether due to fraud or error.



In preparing the special purpose financial statements, the Executive Committee is responsible for assessing the entity's ability to continue as a going concern, disclosing, as applicable, matters related to going concern and using the going concern basis of accounting unless the Executive Committee either intends to liquidate the entity or to cease operations, or have no realistic alternative but to do so.

Auditor's Responsibilities for the Audit of the Special Purpose Financial Statements

Our objectives are to obtain reasonable assurance about whether the special purpose financial statements as a whole are free from material misstatement, whether due to fraud or error, and to issue an auditor's report that includes our opinion. Reasonable assurance is a high level of assurance, but is not a guarantee that an audit conducted in accordance with ISAs (NZ) will always detect a material misstatement when it exists. Misstatements can arise from fraud or error and are considered material if, individually or in the aggregate, they could reasonably be expected to influence the decisions of users taken on the basis of these special purpose financial statements.

As part of an audit in accordance with ISAs (NZ), we exercise professional judgement and maintain professional scepticism throughout the audit. We also:

- Identify and assess the risks of material misstatement of the special purpose financial statements, whether due to fraud or error, design and perform audit procedures responsive to those risks, and obtain audit evidence that is sufficient and appropriate to provide a basis for our opinion. The risk of not detecting a material misstatement resulting from fraud is higher than for one resulting from error, as fraud may involve collusion, forgery, intentional omissions, misrepresentations, or the override of internal control.
- Obtain an understanding of internal control relevant to the audit in order to design audit procedures that are appropriate in the circumstances, but not for the purpose of expressing an opinion on the effectiveness of the Entity's internal control.
- Evaluate the appropriateness of accounting policies used and the reasonableness of accounting estimates and related disclosures made by management.
- Conclude on the appropriateness of the use of the going concern basis of accounting by those charged with governance and, based on the audit evidence obtained, whether a material uncertainty exists related to events or conditions that may cast significant doubt on the Entity's ability to continue as a going concern. If we conclude that a material uncertainty exists, we are required to draw attention in our auditor's report to the related disclosures in the special purpose financial statements or, if such disclosures are inadequate, to modify our opinion. Our conclusions are based on the audit evidence obtained up to the date of our auditor's report. However, future events or conditions may cause the entity to cease to continue as a going concern.
- Evaluate the overall presentation, structure and content of the special purpose financial statements, including the disclosures, and whether the special purpose financial statements represent the underlying transactions and events in a manner that achieves fair presentation.

We communicate with the Executive Committee regarding, among other matters, the planned scope and timing of the audit and significant audit findings, including any significant deficiencies in internal control that we identify during our audit.

HLB Mann Judd
Chartered Accountants
Auckland, New Zealand

21 October 2024

ŌTAKANINI TŌPŪ INCORPORATION

ACCOUNTANTS REPORT



WITHERS & CO LTD



PO Box 113
Warkworth, 0941
P: (09) 425 8599
E: admin@withersco.co.nz
W: withersco.co.nz

Ōtakanini Tōpū Incorporation

ACCOUNTANTS REPORT

Todd Wilkin, BCom, LLB, CA MInstD | Withers & Co Ltd | Year Ended 30 June 2024

To the Shareholders of Ōtakanini Tōpū Incorporation

Tēnā koutou.

Thank you for inviting me back to present to the shareholders of Ōtakanini Tōpū and I am sorry that I am unable to attend your Hui in person this year.

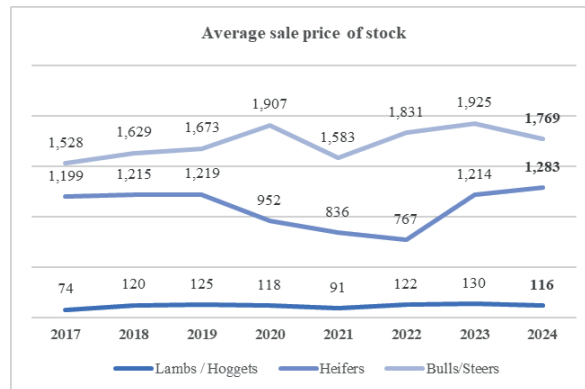
This year has seen the after-tax surplus for the farm reach \$243,107, down from the after-tax surplus of \$296,146 in 2022.

Interest income has increased by \$118,961 as interest rates have risen.

The farm trading income is down \$204,487. Cattle income dropped \$189,731 to \$536,105 while Sheep income dropped \$351,812 to \$533,501. The lower prices were reflected throughout the country creating headwinds across the industry.

The average price per lamb reduced to \$116. The Tōpū is holding 2,291 more lambs than last year and this will improve cashflow in 2025. There has been a drop in the closing number of breeding stock, in line with the decisions by farm management to refresh the flock.

The average price received per head for steers was \$1,769, down from \$1,925 per head in 2023. Sale income was broadly in line with 2023, however, the increased purchases compared to 2023 along with the higher closing stock numbers have impacted on cashflow and profitability.



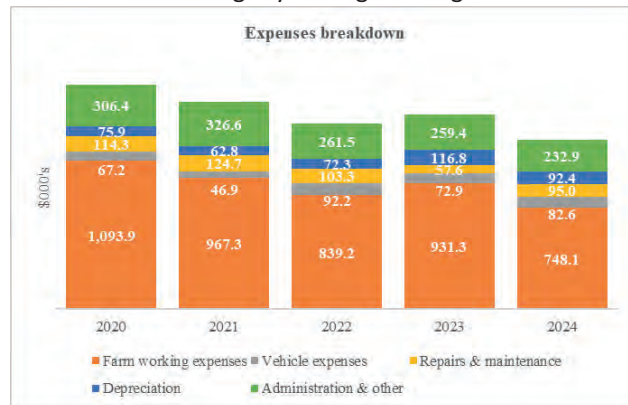
These variances in farm income are timing with portions of the stock likely to be sold in the 2025 year and the income appearing in here.

New income has been received for cartage and access fees. This has gone some way to offsetting the lower cashflow from pure farming income. This is the main driver of the increase in gross farming income.

Total cash expenses were down \$162,411 and have been tightly managed alongside the decreased income.

Farm working expenses were down 22% on the prior year. Significant decreases in fertiliser costs was the main driver with other costs broadly in line with prior years.

Within farm expenses, we see a drop in wages, which is partially offset by the new costs for the contract farm manager. The previous farm managers costs were included in the wages line. When



these costs are added together, the total staff costs for managing the farm are largely in line with 2023.

Repairs and maintenance costs were up 36% on 2023. Increased costs associated with tracks, fences, and gates were the main driver.

The structure of the balance sheet remains very solid, with a ratio of liquid assets (current assets plus livestock) to current liabilities of 2.92, which indicates there are \$2.92 of liquid assets for every \$1.00 of current liabilities, which remains a strong liquidity position. The excess cash on hand has been reinvested in term deposits, taking advantage of the increase in interest rates.

It is worth noting that the Tōpū received the first of three payments associated with a grant agreement with Te Puni Kokiri during the 2024. The total grant is worth \$23,600 plus GST and is restricted to funding advice and feasibility studies in relation to improving and diversifying the profitability of the Tōpū. This funding and investigation will be completed during the 2025 financial year. A further explanation of this grant is available in Note 2 of the Financial Statements.

Term deposits have increased by ~\$333k to \$2.4m. This is a reasonable amount of funds available to fund the future development and growth of the Tōpū.

There are ~\$798k in relation to unclaimed dividend monies. These balances have increased following last year's dividend declaration and appear as other current liabilities on the balance sheet.

Within the statement of movements in equity, on page 10 of the financial statements, the distributions to owners of \$163,557 reflects the cash paid to the identified shareholders for last year's dividend.

Considering the dividend declared last year and the lower profit from the farming operations this year, I would not recommend a dividend at this time. The Topu should manage its cash reserves to allow it to deliver on any initiatives identified in the work funded by Te Puni Kokiri.

Overall, the Tōpū remains in a strong financial position with liquid assets sufficient to fund its operation and growth.

Thank you again for the opportunity to present these results, and I look forward to working with the Committee of Management, the farm manager, and the rest of the Kaimahi in the future.

Nga mihi,



Todd Wilkin *BCom, LLB, CA, MInstD*
Director – Withers & Co Ltd

ŌTAKANINI TŌPŪ INCORPORATION ANNUAL GENERAL MEETING MINUTES 2023

Te Rā: 9 December 2023
Te Wā: 10 am
Wahi: Ōtakanini Haranui Marae, Haranui Road.

Opening:

The meeting commenced with karakia by Temepara Morehu, following by mihi led by Trisya Hemana.
 Himene: He Honore.

Attendance:

A list of attendees and proxies are attached for reference.

Apologies:

Judith Maras, Mary-Jane Povey-Harte, Florence Te O’Haere, Jeffrey Bradly, Rihari Wilson, Priscilla Bowater-Gudsell, Glendith Samson, George Huatahi Albert, Te Arahi Kapea, Pene Paraone.

Motion to accept and receive apologies moved by Kim Bowater-Fill.
 Seconded by Connie Povey.
 Carried

Voting Overview:

Michelle Hill provided information on the voting method, stating that it would be determined by those present in accordance with the Māori Incorporation Constitution Regulations (MICR). It was determined that voting would occur through a secret ballot, utilising share-weighted voting. Michelle then proceeded to read out the Resolutions and informed attendees that a designated time would be allocated for shareholders to cast their votes before the conclusion of the voting period.

Additionally, it was advised, in the typical process of an Annual General Meeting (AGM), elections for Committee of Management vacancies would take place. However, since the number of nominations received by the closing date of November 24 at 5 pm did not exceed the two available vacancies, an election was deemed unnecessary. The new members elected to the Committee of Management without opposition are Gary Brown, who will serve a one-year term to fulfill the remainder of Brenda Christiansen’s term, and Rihari Wilson, serving a two-year term to fulfill the remainder of Anna-Rose Steedman’s term.

Annual General Meeting Minutes 2022:

Marama Stead read the minutes of the Annual General Meeting (AGM) for the year 2022. There are no issues or changes arising from the minutes that need to be noted.

Financial Report:

Todd Wilkin read the Financial Report, which reflects a positive performance with an after tax surplus of \$296,146, a notable increase from the previous year’s \$62,807. The farm’s trading income experienced a boost of \$247,439, driven by improvements in both sheep and beef gross income.

The report highlights an unclaimed dividend amount of \$656k, prompting shareholders and their whānau to take steps to claim these funds. An appropriate level of dividend this year needs to factor in considerations for future investment required in the farming operations and any further requirements for repairs and maintenance of the whenua. A sustainable dividend of \$2.00 per share has been suggested by the Committee of Management and this is supported by Todd's analysis of the accounts.

The shareholders had the opportunity to examine the financial report, addressing any queries or concerns page by page.

The Farm Working Income saw positive trends, including an approximate \$127,000 improvement in sheep income and a \$208,000 boost in cattle sales, resulting in an overall \$317,000 improvement in the gross farming income.

The Farm Working Expenses increased by \$92,000, attributed in part to fertilizer costs, lime, and re-grassing. Key drivers for these increases included shearing contractors, a rise in wages (farm manager and a full-time administrator), and necessary improvements in wages in alignment with actual requirements to pay kaimahi.

Repairs & Maintenance

There have been significant decreases in fencing due to a lot of the work being done by the kaimahi instead of contractors to reduce costs.

Administration Costs remained largely consistent with previous years, with lower costs attributed to the absence of Farm Advisory, aligning with the committee's 2022 strategic review.

The 2023 Forestry Valuation costing \$6,586 confirmed no changes, damages or significant losses post Cyclone Gabrielle. Insurance for the forestry, initiated in approximately in 2018, is deemed crucial as the trees approach the end of their growing life.

The Beef Cattle Trading Account noted a slight decrease in sale numbers but higher overall margins, attributed to lower cattle purchases by the farm manager and a shift towards stocking and growing on the farm for increased profitability.

The Sheep Trading Account mirrored the cattle account, with a gross profit of \$885,414 for 2023, reflecting the Stock Policy. Despite lower sale numbers, overall profit increased.

As at the 30th June 2023, **the Balance Sheet** showed \$688,983 in the BNZ Farm First Call Account, \$2,385,896 worth of livestock, and approximately \$2,000,000 in Term Investment. No re-evaluations on the land or buildings have been made at this stage however the Committee may consider this going forward.

Other Current Liabilities, specifically Unclaimed Dividends totalling \$694,817 represent the largest liability Ōtakanini Tōpū has. Shareholders are urged to claim their dividends, as this will reduce the liability. A spreadsheet detailing all unclaimed dividends is available on the Ōtakanini Tōpū website and social media platform page.

Farm Report:

This was presented by Michelle Hill on behalf of Jeffrey Bradly.

The 2023 farm report highlights a commendable after-tax profit of \$296,146, achieved through effective management despite global market challenges and adverse weather conditions. The forestry demonstrated resilience to Cyclone Gabrielle, with minimal damage. Livestock performance improved, transitioning to traditional beef herd breeding, and sheep operations adapted to challenges, achieving higher weights and increased margins. Farm working expenses remained comparable, with reduced maintenance costs, and capital expenditure focused on machinery upgrades. The farm thrives, showing a healthy net profit, continued investment, and potential dividends. The dedication of the kaimahi has been crucial to the farm’s success, contributing to a positive outlook for the future.

The following Q&A followed:

▷ Who wrote the Farm Report?

Jeffrey Bradly and Michelle Hill did.

▷ What has happened to Justin Thompson?

He has moved on to pursue other opportunities. His departure from Ōtakanini Tōpū was on good terms.

▷ The Farm Report mentions aiming for a reduction in sheep deaths to meet a KPI of 3%, it appears there was a high number of deaths this year.

The number of deaths this year was 945 are all identified deaths. Continued wet weather was nationwide in 2023. It was hard on sheep farming with lack of sunny days, the cyclone and flooding. These elements attributed to the inability for grass to grow. Another consideration is the older ewe flock on the Tōpū. These deaths [6.2% - numbers in the sheep flock] are still within the national average for deaths. The losses are not a reflection of the farming operations.

Chair Report:

This was presented by Trisya Hemana, reflecting on a year of growth and planning.

Thanks was given to the dedicated kaimahi for their outstanding commitment to the Tōpū and its farming operations, with acknowledgement of the departure of the Justin Thompson. Financially, it was reported a modest profit and substantial capital investments amid challenges in the agricultural sector. Severe weather events caused damage, and Tarawera paper road access issues are being addressed with shareholders and Auckland Transport. Governance training was prioritised, and the Tōpū’s mission, vision, and values have been updated through the committee’s strategic review for future success. Looking ahead, the committee sees opportunities for progress through innovation and collaboration.

Following on from the report, a brief summary about what's on the horizon for the Tōpū given. This included:

- ▷ The committee focusing on strengthening relationships and fostering teamwork through funded governance and operational team bonding sessions.
- ▷ Working on drafting an initial Constitution document for OTI in consultation with shareholders.
- ▷ Succession planning involving boardroom buddying, providing opportunities for rangatahi to learn about governance, board skills, and decision-making processes.
- ▷ Livestock health and quality improvement, ongoing farm infrastructure enhancements, and reopening access for shareholders.
- ▷ Social engagement initiatives including at least two annual events on the farm. Regular quarterly communication updates to shareholders covering projects, events, achievements, and challenges.
- ▷ Exploring sustainable diversification options for additional revenue and employment opportunities.
- ▷ Efforts to settle the Share Register Audit and the Audit of the Incorporation with the MLC.
- ▷ Actively working on reclaiming Tarawera paper road for exclusive use by shareholders and their families.

Tempara Morehu reflected on the atmosphere of past annual general meetings, recognising that the present meeting was well-organised. He commended the attendees for their commendable behaviour during the gathering.

Malcolm Paterson noted any alterations to the sheep and beef farming practices on the Tōpū would require careful consideration of the Tōpū's environmental plan. It is highlighted that the existing Environmental Farm Plan must undergo a review and update to encompass the completed initiatives and incorporate future strategies that align with the farm's sustainability and environmental goals.

General Business:

Education Grants

Shareholders are advised that the Tōpū does not provide Education Grants however in the past a Grant of \$5000 was available to groups who met the eligibility criteria. Due to external individuals and groups not associated with the Tōpū applying for this grant, the grant was dis-established and those funds were injected back into the farming operations.

Stock selling/sold to whānau

Unfortunately, due to MPI compliancy “Select and slaughter” [buying an animal from a farmer and then have it slaughtered for the meat] is illegal. Live stock can be purchased but the purchaser must own and look after that animal for 6 months prior to slaughter. Non compliancy or breaking the rules imposed by MPI can result in fines of \$75,000 for individuals and \$300,000 for corporations. The committee will explore potential viable options.

Cadetship for rangatahi [on-farm]

Establishing a succession plan inclusive of a cadetship is a key focus for the committee. The committee will need to investigate the legal aspects and necessary criteria for its implementation.

Access and Hunting

The final stages of planning are underway to offer throughfare access and potential hunting opportunities for shareholders and their whānau.

Makarau Farm Lease

The Tōpū’s lease is nearing its expiration in January, and resources are being relocated to the main farm for potential future utilisation. Any items deemed unnecessary will be sold, and the proceeds will be reinvested into the Tōpū.

Farm Manager role

In the absence of a farm manager, current committee member Jeffrey Bradly has taken on this role in the interim. The Te Ture Whenua Māori Act 1993, Section 274A (1) states “A person is not disqualified from being elected or from holding office as a member of the committee of management because of that person’s employment as a servant or officer of the incorporation, or interest or concern in any contract made by the incorporation”. Jeffrey also remains as a contributing committee member. It is imperative that risk and potential risks are managed by the committee’s internal policies and compliancy with the Act.

Dust on Haranui Road

Soon, the committee will deliberate on and put into action measures to reduce the impact of dust generated by its livestock trucks traveling on Haranui Road.

Urupa Track

The committee is willing to collaborate with the marae trust and wahi tapu committee to potentially contribute to the upkeep of the track.

Resolutions:

Craig Taylor and Stacey Siddle from Independent Election Services presented the results from the resolutions. 27 voting documents were issued to attending shareholders and those with proxies. 26 voting documents were received back, representing a 96.3% voted turn-out.

Resolution 1. Receive and Confirm the Minutes of the 2022 AGM

For: 12833.09552

Against: 0

Blank: 43

Resolution 2. Receive and confirm the Consolidated Financial Statements and Auditors Report of the Year Ended 30 June 2023

For: 12833.09552

Against: 0

Blank: 43

Resolution 3. Appoint an Auditor and Share Valuer for the Financial Year 2024

For: 12833.09552

Against: 0

Blank: 43

Resolution 4. Remuneration of Committee of Management members of Ōtakanini Tōpū Incorporation remains unchanged for the 30 June 2024 Financial Year

For: 12833.09552

Against: 0

Blank: 43

Resolution 5. Authorise by resolution, a dividend of \$2 to be paid to shareholders as determined by the Committee of Management.

For: 12833.09552

Against: 0

Blank: 43

New Committee of Management Members:

Gary Brown spoke to the audience, providing a speech about his candidacy for the committee. He shared his expectations and aspirations for the incorporation, committee and its shareholders and families.

Attendees

Malcolm Paterson
Kim Bowater-Fill
Sharon Dempsey
Witai Povey
Rewiri Haretuku Hill
Norma Rae Arlidge
Maramatanga Stead
Eamonn Harte
Billy Tapurau

Terina Hemana
Rangi Marie Hart
Henare Manukau
Shane Hemana
Tia Mania Kawiti
Elaine Paikea
Gary Brown
Inutai Rusden
Connie Povey

Tama Uruamo
Temepara Morehu
Waratah Eruera
Denise Hohepa Stewart
Vivienne Manukau
Trisya Hemana
Michelle Hill
Hayley Hill
Moana Povey

Attendee (Proxy)

Waratah Eruera
Hayley Hill

Held For

Judith Maras
Awa Hudson
Hira Taogaga
Phillip Hill
Clem Hill

Karakia Whakamutunga: Gary Brown

12.40pm

Confirmed as a true and correct record
of the Ōtakanini Tōpū Incorporation AGM
held 14 December 2024.

Chair:

Signature:

Secretary:

Signature:

Date:

ŌTAKANINI TŌPŪ INCORPORATION

SHARE REGISTER 2024



Share Register 2024

HOLDER NO	NAME	SHARES HELD
2	Ani Herewini or Ani Kapea Herewini	374
8	Arthur Potter	15
9	Te Aroha Wenei Maihi	3
10	Aroha Adele Paul or Aroha Adele Paora or McMahon or Bird	185
12	Aata Pairama	5
13	Alma Potter	15
14	Autu te Hanga te Puke or Te Ao Tu Te Puke-Watson	65
15	Alfred Francois Mariassouce	208
21	Eruera Pairama	5
26	Ema Teira or Emma Wright	33
28	Freda Violet Rankin	101
30	George Rapana Hill	800
32	Geoffrey Moana Cartman or Geoffrey Moana Timoti	377
38	Hone Haki Hunia II or Hone Haki Hunia or Hone Hunia	41
39	Hone Kerei	61
40	Hone Iwingaro Kapea	65
46	Hori Kupenga Rawhiti	914
47	Hemi Pomare	139
48	Hemi Teihi Panui or Hemi Te Ihi Panui	122
52	Henare Rawiri Kepa	16
53	Hemara Rawiri Kepa	16
54	Hepi Wenei Maihi	3
55	Hinemoa Wenei Maihi or Mrs Ruby Grey	3
57	Hinenuitepo Okengaroa Wenei Maihi	3
59	Hotatu Pita Panui or Haotahi Panui or Hautahi Parata or Hautahi Haotahi	13
67	Hirini Pakinga Renata Tane	36
69	Hoki Piwara Uruamo	285

72	Himi Aperahama or Himi (Jimmy) Abraham		14
76	Haupai Teihi Panui or Rata (Mrs) or Huapai Rata or Haupau Teihi Rata		1
79	Hohipera Teira or Sophie Haku (Mrs)		33
85	Isabella Ruarangi or Ruarangi Paikea Ruarangi or Ruarangi Isabella Paikea or O'Meara		354
86	James Frederick Povey		86
87	Te Kai Keepa		118
91	Kelvin Leonard Povey or Kelvin Leonard Morehu or Te Reo Haa O Haahi Ratana Morehu		626
93	Kapairoa Rawiri Kepa		16
98	Kathleen Paenganui or Kathleen Conroy		52
99	Te Kapua-o-te-tiriti-o-Waitangi Moki or Wilcox (Mrs)		1120
101	Karoria Hareraia Pakaru		5100
102	Kenneth Potter		15
103	Kereihī Teira or Grace Tana (Mrs)		33
106	Meri Hori Konore or Morgan (Mrs)		31
107	Meri Kuru Manukau or Meri Smith		207
110	Mere Whakarau Hetariki Hemana or Merewhakarau Patuwai		291
113	Maroro Parata or Maroro Pita Panui or Matoro Taotahi		13
115	Materita Tai Watene or Mararita Watene		29
116	Mereana Pakiorehua Uruamo or Mereana Pakiorehua Hauraki or Mereana Pakiore Hua Hauraki or Paki Paora or Pakiorehu		40
119	Mu Pairama or Mu Akariri		15
120	Mohi Pairama		5
122	Mariana Cartman or Pomare, deceased		536
125	Mari Pairama		5
126	Mareea Pairama		5
127	Mareea Hori Konore		31
128	Mareea Teira or Mrs Maria Leonard		33
130	Meeke Hori Konore or Max Connolly		31
134	Morehu Kerei or Te Morehu Kerei		61
135	Merata Ani Renata Tane or Apiata (Mrs)		36
137	Makereta Tahimarae Riki Kerei		29
141	Morini Aperahama		15
142	Maggie Naomi Mariassouce or Potter (Mrs) or Margaret Naomi Potter		417
143	Matua Kaipara Mate Komene or Matua Komene or Matua Kaipara Komene		686

144	Mangu Wiremu	13
151	Ngina Rawiri Kapa or Kemp	16
153	Ngawairo Hiramā	17
154	Nepia Hiramā	17
155	Nepia Wiremu Paikea or Rere Wiremu Paikea	262
156	Nuku Iwingaro Kapea or Nuku Kapea	65
159	Ngahuia Hori Roera	93
160	Ngapaki Wiremu	13
163	Ohaki-o-te-temepara Kupenga Rawhiti or Ohaki Kupenga Rawhiti	14
164	Poupouahi Tawaewae or Poupouahi Wiki Waata	136
165	Porera Taitimu or Taitumu	58
171	Paora Tai Watene	125
172	Pepehi Te Arahi or Pepehi Riki Kapea or Te Pehi Te Arahi	502
173	Puti Hunia or Puti Haki Hunia	82
177	Pateoro Wenei Maihi	3
178	Pirihira Hiramā	17
182	Pauline Renata Tane or Pauline Renata Wynyard	36
183	Parata Mate Komene or Parata Mate	2468
186	Te Ruma Whakatau	483
190	Ripo Parata or Ripo Pita Panui or Hauripo Taotahi	13
195	Rupu Paraone	2
197	Ruihi Hemara Paraone	74
198	Ruiha Aperahama	15
204	Riwia Paenganui	52
205	Rapine Te Whetu Kakarana or Cochrane	103
206	Rauoriwa Wenei Tamihana or Tunui or Te Rau Orewa Tunui or Olive Tunui	222
209	Renata Paora Renata Tane	36
210	Reo Ngaro Taihi Panui or Reo Ngaro Teihi Panui or Herewini (Mrs) or Te Reo Ngaro Te Ihi Herewini	2
211	Rawiri Teira or David Williams	33
216	Tame Panapa	131
222	Timi Tai Watene or Timi Watene	29
223	Timi Hori Konore or Connolly or Jimmy Connelly	31
227	Tame Pairama	5

228	Tawhina Te Reneti Maihi (or Tawhina Te Wenei Maihi)	16
231	Tu Piri Paraone Taraia	582
232	Tumanako Reweti or Rewiti	138
235	Thomas Napier Cross or Tamati Nepia Cross or Tamati Paki Cross	2034
241	Timoti Teira or Timoti Taylor	33
245	Wana Ruarangi Paikea	354
247	Wiremu Pomare	139
250	Wirihana Hawke	13
256	Te Whatarauhi Himiona Poni	59
257	Waina Waimaria Hemana	159
260	Wharepuhi Hiramā	17
263	Whereri Tatana Manukau	148
268	Maungatai Akariri	696
275	Elaine Luana Uruamo Porter or Elaine Luana Uruamo Dick	144
276	Evonne Marie Uruamo Porter	144
277	Michael Te Whakariki Uruamo Porter	144
278	Hoani Neri Uruamo Porter	144
279	David George Uruamo Porter	144
280	William John Uruamo Porter	144
281	Mihi Te Rina or Mihi Weterē	8
282	Mautini Patuwai or Weterē	8
283	Mihi Mane Lazarus	8
284	Rangimaria Tamihana	8
285	Koringo Taunga or Koringo Joe	8
286	Putiputi Tamihana	8
287	Frances Tamihana	8
288	Rawerawe Herangi (Mrs)	13
290	Pamera Te Ruihi Warner	10
291	Kororia Mei Povey or Gloria Timoti or Gloria Mei Povey	7
292	Rangimarie Matia	205
293	Rerio Grace Thompson	169
294	Kiwa Hemana	194
295	Kimete Smithy Ashby	194

296	Karewai Haimona	13
297	Te Aweawe o te Rangī Rapana or Aweaweoterangi Rapana or Te Awe Awe Rangī	219
298	Rangimarama Rapana	214
301	Kohi Wiapo	83
304	Rangipukohu Konore	83
305	Tuhirangi Manukau or Tuhirangi Manukau II	83
306	Taupae Manukau	166
308	Te Puawai Manukau or Te Puawai Blossom Connelly	83
309	George Matthews or George Hill Mathews, deceased	36
310	Victoria Queenie Matthews or Skipworth	36
311	Mary Matthews	36
312	Rebecca Marjorie Matthews or Rebecca Marjorie Friesen or Rebecca Marjorie Nicholls	36
313	Donald Raymond Matiu	36
321	Mamao Ngatiwhatua Waata or Ann Edwards (Mrs)	567
324	Richard Harikoa Ngatiwhatua Waata	567
325	Urikaimori Pereri Tane or Reweti (Mrs)	24
326	Jane or Heni Pereri Tane or Park (Mrs)	24
327	Mary or Mere Pereri Tane or Townhill (Mrs)	24
328	Fred Pereri Tane	24
329	Cinderella Pereri Tane	24
330	William or Wiremu Pereri Tane	24
331	The Proprietors of Otakanini Topu Incorporation	1957
337	Hapi Murray Tautuhi Pihema	32
338	Okengaroa June Phillips	200
339	Geranium Pungatara	80
340	Rose Rawiri	80
342	Maki Marahia Moki or Maki Hart	68
343	John Povey Thompson & Selwyn Harry Peters jointly as trustees of the estate of Cyril Myrah Hanatoria Povey	716
344	Mei Kaha Waiomio	40
348	Peia Tane	40
349	Hori Poutawera Tane	40
350	Raiha Ratana	40
351	Petera Komene Tane	40

352	Arthur Tane		40
353	Andrew Walter Tane		40
354	Ronald Waaka or Ronald Walker		225
356	Waata Moki		432
357	Herewini Moki, deceased		432
358	Rihari Moki		431
361	Mary Moki or Mary Mulloy		189
362	Rangi Moki		189
363	Lilly Moki or Te Ririkore Te Paa (Mrs) or Te Riki Moki		189
365	Mereore Hira Netana or Mrs Rewi Davis or Mereore Hira Netana Reweti		20
367	Tauwiwi Hira Netana or Tom Nathan		20
368	Hui Te Rangiora Netana or Mrs Wi Paraha Reweti, deceased		7
370	Gilbert Donald Taylor		8
371	Barbara Anne Anderson		8
372	Nga Roihoa Te Morehu		127
375	Te Kahui-iti-ote- Haahi Ratana Morehu		127
376	Pumaunoo ote Haahi Ratana Povey or Pumaunoo Ote Haahi Ratana Morehu		127
377	Diane Myone Rangitatau Bradley		127
379	Albert Hepi Moanariki Moon		101
380	Henare Komene or Henare Kaipara Komene		492
381	Mate Komene or Mate Kaipara Komene		492
382	Pikiteora Puru (Mrs) or Piki Kaipara Komene		492
383	Kapowairua Komene or Kapo Kaipara Komene		492
385	Norma Thompson		5
387	Rahera Kepa Glavish		5
390	Rongo Timi Manakau or Rongo Manukau		17
391	Roopu Reipa Kingi or Roopu Reipa Timi Kapea		17
392	Karaka Kapea or Karaka Timi Kapea		17
393	Tauterangimarie Kapea or Tauterangimarie Timi Kapea		17
394	Mokai Kapea or Mokai Timi Kapea		17
395	Poihi Kapea or Poihi Iwingaro Kapea		46
397	Waina Panui or Waina Iwingaro Kapea or Panui		46
398	Raungaiti Panui or Raungaiti Iwingaro Panui		46

402	Terekia Aperahama	37
405	Manahi Williams	6
406	Ware Williams	6
407	Maggie Te Wani (Mrs)	6
408	Susie Williams	6
409	Terena Williams	6
410	Kenneth Williams	6
411	Te Rauoriwa Mavis Manukau	11
412	Te Manuao Lewis	11
413	Tua Hine Girlie Dunn	11
414	Snowy Haupapa Paikea	11
416	Te Ata William Paikea	11
417	Teina Boy Paikea	11
418	Rangi Marie Anne Karena or Marie Karena or Marie Dawson	70
419	Cynthia Warbrick or Cynthia Jane Atareta Arnold	229
420	Meinata Hemana or Fred Hemana	30
421	Caroline Hemana or Caroline Vizor	124
422	Maryanne Hetaraka or Meriana Hemana or Meiana Adriann Hetaraka	127
424	Yvonne Gay Keane or Gay Yvonne Keane	26
426	Kenneth John Walsh	9
427	Dinah Crystal Walsh	10
428	Christopher Riki Walsh	10
430	Thomas B D Cross	106
431	Mihiwira Taogaga or Miri Hana Taogaga or Mihiwira Kathleen Taogaga	1401
432	Charles or Charlie Panui or Charles Te Ihi Panui or Charles T Panui	1
433	Nada Povey or Naida Rangimarie Povey or Naida Glavish	592
440	Peggy Nehemia	10
441	Jimmy Hemi Mansell	95
442	Ruby Nathan or Timoti	30
443	John Waterhouse or John Mick Waterhouse	48
445	Raeme Taha Whakatau (Mrs Tay) or Reimepaha Whakatau	37
446	Eric Whakatau	37
447	Maria Whakatau	37

448	Keepa Whakatau		38
449	Richard Douglas Ashby		41
451	Poata Povey		8
452	John Povey Thompson or John Thompson or Oscar John Thompson		168
453	Inutai Rusden or Inutai Povey or Inutai Rose Rudsen		168
454	Puawai Mason (Mrs) or Puawai Povey or Blossom Mason or Puawai Blossom Mason		168
456	Rebecca Povey		41
457	Sally Ann Povey or Dahlia Winifred Sally-Ann Povey		168
458	Elizabeth Bowater or Elizabeth Titiana Bowater or Titiana Bowater		138
459	Arthur Povey or Arthur Mansell or Arthur Tooley Mansell		86
460	Parata Povey or Parata Rewiti Povey		168
461	Witai or Witaiawa Povey (senior) or Witaiawa Bill Povey		168
463	Hilda Shortland (Mrs) or Hilda Taurewa Shortland		149
464	Henry Povey		168
465	Kingi Povey or Kingi Puarangi Povey		168
466	Ben Povey or Ben Povey (senior) or Ben William Povey or Bernie William Povey		163
467	Franklyn Bowater		10
468	Amiria Brown or Amiria Tahī Piri Brown or Paraone or Mrs Towai Manuel or Miria Tahī Piri Paraone (Mrs Towai Manuel)		108
470	Elizabeth Brown (Mrs)		39
471	Frederick Brown or Frederick Paraone Meinata		1
472	George Cullen Brown		12
473	Haahi Brown or Haahi Tahī Piri Brown or Paraone or Haahi Tahī Piri Paraone		108
474	Ina Brown or Ina Baldwin		13
475	Te Kaiarahi Mae Brown or Nathan (Mrs) or Kurlie Nathan		13
476	Kapu Brown or Kapu Tahī Piri Paraone, deceased		108
477	Louis Hemana Brown		118
478	Manuao Tahī Piri Brown or Paraone		108
479	Netana Karl Brown or Karl Netana Brown or Karl Paraone Meinata		13
480	Pene Brown or Pene Tahī Piri Paraone		107
481	Te Pera Nellie Brown or Nellie Te Pera Brown or Clay		13
482	Temorehu Garry Brown or Garry Temorehu Brown or Te Morehu Garry Brown		582
483	Piripono Gittos Brown		12
484	Raniera Brown or Raniera Tahī Piri Paraone		108

485	Reginald Happy Brown or Reginald Hapi Brown or Reginald Paraone Meinata	13
486	Tapihana Brown or Dobson Paraone Meinata	13
487	Tera Brown or Tera Tahī Piri Paraone	107
488	Kathleen Buckley	39
489	Te Rina Hemana Burdett (Mrs)	217
490	Rena Hinemoa Bycroft	270
492	Peter Karl Bycroft	50
493	Wayne Waru Richards	50
494	James Povey (Jun) or James Povey	46
495	Mihī Pine Connolly	62
496	Reokore Curtis or Reokore P Curtis	13
499	Vicki Gaylene Wright or Vicki Gaylene Fowler or Vicki Gaylene Slatter	123
500	Te Aroha Hatley or Te Aroha Hetley Povey Moki	30
502	Ngakuru Hemana	268
503	Ngoi Waereti Hemana or Violet Hemana	28
504	May Johnson or Haerata May Johnson	307
505	Toto Timoti	96
506	Eddy Timoti	27
507	Milly Hetaraka or Milly Cross or Milly Miri Hetaraka	404
508	Sammy (Haami) Timoti or Sam Timoti or Charlie Toto Timoti (Sammy)	123
509	Maramatanga Maria Stead	20
510	John Pukeroa Herewini	251
511	Judith Maras or Judith Mary Maras	2024
512	Tauhia Hill, deceased	5
514	Te Waru Hill or Waru Hill	15
516	Phillip James Hill	1000
517	Arahi Tukua Hira	487
518	Bella Ngapera Hira (Mrs)	47
519	Inutai Hira or Inutai Greenwood	409
521	Jean Rerewairua Hira or Christiansen	603
522	Martha Hira or Martha Julia Hill	333
524	Te Awa Alice Hudson	2065
526	Theresa Karena	10

527	Virginia Wright or Virginia Carolyn Ann Warriner		222
528	Evelyn Dawn Perrett (Mrs)		123
529	William Richard Wright		432
530	Christina Karena or Christina Te Pere Karena		14
531	Valli Taogaga		1150
532	Raymond Tuku Poto Karena		15
533	Maisie Tokowha Komene or Mate Te Tokowha Mate Komene		3
534	Anna Ngakara Mackey (Mrs)		48
535	Mihi Patoromu Weneti Maihi or Mihi Tanga Kupa or Elizabeth Cooper		13
536	Timirua Patoromu Weneti Maihi or James Marsh or Timirau Patoromu Weneti Maihi		13
538	Matire Panui		483
539	Pepsi Whakatau		38
540	Charlie Whakatau		37
541	Adam Whakatau		37
542	Brenda Whakatau		37
543	Tui Martin (Mrs)		251
544	Helen Matthews		36
545	Maniwati Hazel Waaka or Hazel Walker		13
547	John Moki		241.75
548	Hamstead Ward		39
550	Takerei Wayne Pihema		401
551	Glenn Wilcox		100
554	Eugene Robert Nathan		8
555	Harley Louis Nathan		8
556	Louis Robin Nathan		8
557	Perangi John Nathan or Pirangi John Nathan		8
558	Ena Adele Porter or Nathan		180
559	Leslie King Noda		52
561	Hoki Paikea		3
562	Mina Paikea		3
563	Muru Ahi Paikea		3
564	Paraire Nia Paikea		3
565	Te Puea Paikea		3

566	Waimaria Paikea	3
567	Wairuora Paikea or Fairburn (Mrs)	3
568	Nick Rata	80
571	Marlene Myrtle Annette Pihema	27
572	Freda Vera Toki	139
573	Tiamania Povey	39
575	Carol Waru Rapana	326
576	Waata Richards or Waata Herewini Richards	60
577	Harata Stevens or Stephens	54
578	Karu Rapana (Mrs) as administratrix of the estate of Miki Rapana, deceased	55
579	Richard C G Thompson as administrator of the estate of Niutireni Nia Rua, deceased	270
580	Te Aroha Shelford	3
581	Motatau Shortland	19
582	Vivienne Speechley	11
583	Petrina Tia Takiari	28
584	Kiritahanga Thompson as administrator of the estate of Eruera Hirama, deceased	16
586	Piki Te Ora Waata or Piki Te Ora Marie Waata or Piki Te Ora Marie Tumahai	271
588	Muri Tamihana Waata	182
589	Poinciana Waata	67
590	Chris James (Paraire) Taylor	24
591	Elizabeth Taylor (Mrs) or Elizabeth Wiha Taylor	33
592	Ricki Hori Pomare Taylor	23
593	Henry Putaruru Thompson	862
594	Atawhai Timoti	75
595	Kura Timoti or Tangaroa (Mrs) or Kura Foreman	65
596	Tuhirangi Timoti	75
597	Irene Hiria Turoa (Mrs)	8
598	Arthur Uruamo	56
599	David Uruamo	56
600	Eriapa Maru Uruamo	41
601	Pikiteora Uruamo (Mrs)	696
602	Tearoha ote Haahi Ratana Uruamo or Morehu	41
603	Tio Manaki Uruamo	141

604	William Uruamo		55
605	Nola Walters or Nola Waata		567
606	Earl Herbert Matthew Wright		43
607	Kevin Ross Wright		33
608	Rawson Sydney Ambrose Wright		43
609	Prince Davis or William Prince Davis		416
610	Arna Maree Smith for a life interest with remainder to Violet Abraham		37
611	George Henry Hill or George Hill		15
612	Marama Morehu or Marama Morehu Lee		88
613	Ranea Tama Morehu or Ranea Tama Morehu Lee		89
614	Pumau Lawrence Reweti		50
615	Tom Peters		221
616	Peter Nehemia		129
617	Lyall Wilcox		140
618	Marigold Merikoura Panui or Mrs Desmond Panui		434
619	Iraani Paikea for a life interest with remainder to Joanne Melody Paikea		354
620	Terrence Gregory Passell		567
621	Ngapera Rapana Kaitiaki Trust (Maori Trustee as kaitiaki trustee)		434
622	Margaret Carman (Tua) for life or until remarriage with remainderman equally to: Dianne Stephens, Norma Rae Arlidge, Ma		1123
633	Wana Rurangi Paikea for life or until remarriage with remainder equally to: Zena Joan Booth, Elaine Mary Paikea, Lynette M		323
634	Awhina Mansell		95
635	Elizabeth Mansell		95
636	John Hone Mansell		95
637	Mannaki Mansell		95
638	Pai Here Teia Mansell		95
639	Rosetta Mansell		138
640	Hapai Helen Reweti		1045
641	Whakaotinga Ote Temepara Te Rangi		10
642	Richard Peters		3
644	Rawson (Ross) and Wikitoria Hine Kukurangi Wright Whanau Trust		100
646	Gus and Janet Paikea Whanau Trust		3
647	Moana Mei Povey or Moana M Povey		46
648	Whare William Povey or Whare W Povey		46

649	Colleen Sandra Mathews or Colleen S Povey	46
650	Phillip Tuhinga Reweti	110
651	Margaret Wainui Irala	110
652	Meringaroto & Mare Pihema Whanau Trust	89
653	Aaron Brett Waata	23
654	Vernice Rata Waata	23
655	Sharlene Kui Waata	23
656	Stephen Haami Reweti	111
657	Newton Terrance Apirana Reweti	111
658	William Paratene Reweti	111
659	Clem Hill	2407
660	Hapi and Alice Pihema Whanau Trust	260
661	Pipiharauroa Miriama Paterson	13
662	George Hemi Grey	12
663	Wira Grey or Wiira Kerei	12
664	Pango Pukutohe Kerei	12
665	Hayden Delves	4
666	Nadia Delves	4
667	Katarina Delves	4
669	Rimene Hill	5
670	Tuata Cruickshank	25
671	Eileen Hill	5
672	Harold Hill or Harold Mathew Hill	15
673	Waratah Eruera	15
674	Haretuku Hill or Harry Haretuku Hill	25
675	Joan Hill	2
676	Hemoata Hill	2
677	Lily Hill	2
678	Mei Hill	2
679	William Hill	1
680	Holy Hill	1
681	Rawinia Kani	3
682	David Marshall	2

683	Joe Marshall		2
684	Allan Marshall		2
685	Dahlia Hemopo		2
686	Dick Koitikitiki Marshall		2
687	Irene Rahapati Kerei for life until remarriage with remainder to: Robert Kerei, Frances Turahuia Kerei and Willimene Hiria Kerei		61
688	Robert Awa Hill		20
689	Koromiko Richards		10
690	Mercia Davis or Mercia Te Kara Davis		42
691	Debbie Wiapo		41
692	Luana Davis or Luana Glenis Poutai		41
693	Noeline Waru O Noema Davis or Waru Davis		41
694	Jan Cornell or Jan Hanuere Cornell		41
695	Maungarongo Basil Rapana Whanau Trust		434
696	Wiremu Hapati Tane II and Anne Tane Whanau Trust		41
697	Michael Denis Tane		40
698	Eruini raua ko Piu Piu Hawke Whanau Trust		13
699	Hauptai Panui Rata Whanau Trust		170
701	Mihi Hama Hana Te Aroha Blair		59
702	Ruby Ru Barlow Te Uira Waata for life interest or until remarriage with remainder to: Rakei Lovenia Waata, Thomas James Vaka		916
703	Elaine Mary Paikea for a life interest or remarriage with remainder to: Jack Kevin Paikea, Phillip Wayne Paikea, Jutheena Hekia		11
704	Myra Young		92
705	Charles Timoti or Charles Papa Timoti		307
706	Connie Povey or Connie Sandra Povey		92
707	Mark Povey or Mark Mattie Povey		6
708	Cheryl Tangaroa Sharyn Elsie Maria Povey		6
709	Witaiawa Povey or Witaiawa Bill Povey		5
710	Darren Povey or Darren Franklyn Povey		5
711	Pauline Povey or Pauline Timania Povey		5
712	Virginia Povey or Virginia Ann Bowwater Povey		5
713	Trisha Povey or Trysha Marie Povey		5
714	Terewai Witika		15
715	Rakena Takarei Witika		14
716	Graham Witika		14

717	Murray Witika	14
718	Tautoko Roy Kevin Witika	14
719	Rangimarie Witika	14
720	Whetumarama Witika	14
721	Kororia Witika	14
722	Hamera Heta Witika	14
723	Bernard Arohanui Witika	14
724	Patricia Witika	14
725	Jack Hill	10
726	George Hill (Jnr)	10
727	Rosalie Hill	10
728	Ernie Stead or Ernest Patrick Stead	420
729	Te Rina Whakatau	37
730	Valencia Rebecca Pairama	500
731	Tokena Manukau	12
732	Kenneth Manukau	12
735	Winnie Funnel now Ngawini Rua Manukau Paikea Postlethwaite	12
736	David Manukau	12
737	Pauline Koppert	11
738	Robert Ashby	65
739	Ricky Taupo	47
740	Esther Viola Talbot	517
742	Mere Atarangi Baker	101
743	Sarah Grey-Harrison	61
744	Peter Maurice Murdock	21
745	Robin Wayne Paikea	88
746	Florence Edna May Paikea	88
747	Alton Wyatt Paikea	89
748	Kayne Moana Paikea	89
749	Moko Weera Ututaonga or Hogan	144
750	Dennies Matilda Watene	323
751	Edward Thompson	74
752	Moses Thompson or Mohi Thompson	73

753	Olive Mary Sant or Olive Mary Thompson	75
761	Aorangi Irene Haupapa	155
763	Rangi Marie Hart or Rangimaria Hart	155
764	Arthur Henry Povey	154
765	Coral Amelia Corcoran	154
766	Robert Barlow	20
767	Athleen Barlow	20
768	Sharlene Barlow	20
769	Raelene Barlow	20
770	Wiremu Te Whenua Watene	19
771	Jack Taoho Watene	19
772	George Winiata Watene	19
773	Violet Davis	19
774	Mary Kohekohe Phillips	19
775	Fred Watene	19
776	Muriwai Watene	19
777	Lou Harawene Watene	19
778	Iritana Rawiri	19
779	Inuta Watene	19
780	Vicky Watene	6
781	Harry Watene (Jnr)	6
782	Malcolm Watene	7
783	Wikitoria Ani Akariri or Te Pou or Pou	59
784	Connie Akariri	59
785	Donna Kororia Akariri	58
786	Michael Williams	12
787	James Abraham	13
788	Manya Alexandria Watene	29
789	Jimmy Temepara Hemana	9
790	Wikitoria Stevenson (nee Hemana)	9
791	Mara Armstrong (nee Hemana)	9
792	Puawaj Hemana	9
793	Mereana Hemana Wilton or Mary Ann Wilton (nee Hemana)	9

794	Petera Hemana	8
795	Liza Pethybridge (nee Hemana)	8
796	Toby Andrew Hemana	8
797	Tui Hemana	8
798	Diane Te Aroha Hemana	8
799	John Tamihana Hemana	8
800	Robyn Charles Hemana	8
801	Sharon Brown	2
802	Wendy Brown	3
803	Lance Brown	3
804	Lynda Brown	2
805	Glenn Brown	2
806	Jenny Brown	2
807	Paula Brown	2
809	Jocelyn Aroha Beazley Whanau Trust	28
810	Rhoda Whakarongotai Lavinia Mahanga	25
811	Denise Beryl Hapeta	25
812	Charles Hohepa	25
813	Nig Brain Hohepa	25
814	Huia Kenneth Hohepa	25
815	Jennifer Catherine James	25
816	Stephen Lyal Wayne Hohepa	25
817	Anteaus Daniel Hohepa	25
818	Norman Richard Hohepa	25
819	Daryn Hohepa	25
820	Frank Frederick Hohepa	25
821	John William Hohepa	24
822	Roseanne Heihei	4
823	Harriet Kidwell	4
824	Stanley Hohepa	4
825	Moana Hohepa	4
826	Tania Hohepa	4
827	Charlene Hohepa	4

828	Te Wehenga Herewini or Mark	60
831	Herewini Whanau Trust	17
832	Henry William Hemana	19
833	Nancy Waterhouse	48
834	Miriam De Ann Povey	10
835	Chante Loretta Povey	10
836	Larissa Pakura or Povey	140
837	Priscilla Ann Bowater-Gudsell	5
838	Sharon Leigh Dempsey	5
839	Kim Bowater-Fill	5
840	Diane Bowater	5
841	Alan Stewart Timoti	36
842	Joseph Warren Timoti	35
843	Henry Taa Timoti	35
844	Alice Areta Graham	35
846	Ruby T Nathan	35
847	Milly Matoe	35
848	Emma Ann Jessie	35
849	Thomas Samuel Abraham	37
850	Michael John Royal or Roera	53
852	Whetumarama Kauahia Hemana (Mrs Matthew Dunn)	7
854	Alec Britannia Kapea or Alec Britannia Nahi	12
855	George Johnson for a life interest with remainder equally to George Henry Johnson, Emerina Myra Johnson, Antony Edward	96
856	Shane Dennis Hemana	19
857	Howard Hemana	19
858	Charlene Maree Hemana	19
859	Denise Rekeka Lazarus	19
860	Te Arahi Uruamo Croun of Easton	696
861	Joan Taylor	8
862	Heather Taylor	8
863	Allan George Massey and Pomare Paki Kena as executors of the Puti Rachael Kena estate	160
864	Ramona Taogaga or Ramona Alofa Taogaga	123.286
866	Wiremu Reweti	111

868	Richard Reweti		110
869	Christine Galloway		111
870	Patricia Van Der Lubbe		111
871	Gabrielle Taogaga or Gabrielle Punga Taogaga		123.286
872	Hira Taogaga or Hira Pasene Taogaga		133.286
873	Eileen Taogaga or Eileen Pitika Awa Taogaga		123.286
874	Wilma Hemana or Wilma Anne Hemana		73
875	Te Pina Hemana		72
876	Meriana Alicia Hemana		72
877	George Albert		46
878	Nelda Anne Steenson or Povey		626
879	Rupe Te Auma Herewini		60
880	William Makoare		431
881	Pairama Family Trust		5
882	Te Awatea Desai		20
883	Polly Paikea		37
886	Ngaro Violet Paa		18
887	Charmaine Parata		19
889	Marie Connelly		31
890	Frederick & Eva Paraone Meinata Whanau Trust		12
891	Colleen Elsie Timoti for a life interest or until remarriage or entry into a civil union or defacto relationship with remainder to		377
892	Tanya Nielsen		52
893	Gavyn Stanley		52
894	Lynda Ihei		51
895	Anahera Pono ote Haahi Ratana Morehu		254
896	Bruce Patrick Stead		400
897	Racheal Lee Avega		18
898	Jacob Gavin Louis Timoti		17
899	Sophie Victoria Waru Taylor for life interest with remainder equally to Rangimarie Louise Harris, Taitimu Winterburn, There		33
900	Emmanuel W Povey		26
901	Lewis H Povey		36
902	Peter J Povey or Peter John Povey		36
904	Nia Hira-Puriri Whanau Trust		2492

905	Paora/Phillips Whanau Trust	114
907	Beverley Moana Muraahi	346
908	Alexander Phillips	346
909	Charles Henry Davies Phillips	336
910	Roly Phillips	346
911	Mark Paneta Phillips	346
912	Faith Aroha Rongo Rongo Bartlow	346
913	Maungarongo Phillips	346
915	Te Omeka Phillips	346
916	Rangatahi Lance Phillips	346
917	Christopher Rangiatea Phillips	345
918	Betty Donna Maria Tito	345
919	Honeywyn Melody Phillips	345
920	Jackson Phillips	173
921	Albert Phillips	173
922	Ngakuru Hemana for a life interest or until remarriage with remainder to: Ngareta Panui 1/7, Patrick Hemana 1/7, Wiremu	107
923	Davina Reweti or Davina-Titiro-Ki-Temoana Reweti	62
924	Catherine Reweti or Kathryn N Reweti	62
925	Tama Reweti or William Tama Reweti	62
926	Stewart Reweti	62
927	James Reweti or James Te Atu Reweti	62
928	Dion Reweti or Dion Maehe Reweti	62
929	Nepia Reweti	62
930	Waldon Reweti or Waldron Ngawhakaarara Reweti	63
931	Nolan Reweti or Nolan Parata Reweti	63
932	Malcolm Bruce Paterson	2806
933	Edith Iritana Samson	0.54
934	Judith Juliana Panui	0.54
935	Glendith Mercia Samson	0.54
936	Lindith Lindiana Panui	0.54
937	Bennie William Povey (Jnr)	0.54
938	David Josphe Povey	0.53
939	Wilfred Roddell Povey	0.53

940	Mary-Jane Povey (Jnr)	0.53
941	Doris Denise Povey	0.53
942	Stewart Earl Povey	0.53
943	Frederick James Povey	0.53
944	Langsford Quentin Povey	0.53
945	Edward William Tudor Povey	0.53
946	Vicki Polly-Anne Povey	0.53
947	Desmond Kelly Povey	0.53
948	Poko Tiao Tapurau	44
949	Celia Ann Tapurau	43
950	William Michael Tapurau	43
951	Waata Tawaewae Tapurau	43
952	Gina Waimata Tapurau	43
953	Otere Tapurau	43
954	Pani Ani Tapurau	43
955	Charmaine Tapurau	43
956	Elia Tapurau	43
957	Anaru Harley Young	43
958	Shannon Brown	1.5
959	Frederick Brown	0.25
960	Rudolph Brown	0.25
961	Mina Brown	0.25
962	Angela Brown	0.25
963	Kelly Brown or Mulligan	0.5
964	Temepara Ote Haahi Ratana Morehu	696
965	Seu Taogaga	113.286
966	Paul Hill	113.286
967	Rodney Crawford	56.642
968	Verina Crawford	56.642
977	Lance Manukau	21.112
978	Stacey Manukau	21.112
979	Mohi Wiremu Manukau Whanau Trust	527.776
980	Joanne Te Aroha Nice	12

981	Jennifer Freda Ann Rankin	25.25
982	Eli Rankin (Bailey)	12.625
983	Levi Rankin (Bailey)	12.625
984	Chloe Stoneham	25.25
985	Asher Rankin	25.25
991	Hugh Kawharu Whanau Trust	511
992	Nathan Joel Dib	404
993	Jacqueline Isabel Dib	404
994	Raylene Esther Dib	404
995	Stephen Graham Scott	75
996	Rangi Mathew Reweti	10
9987	Erion Ratu Waata	94.5
998	Fern Mahina Waata	94.5
999	Wakaroa Ngatiwhatua Waata	94.5
1000	Robert Kawana Waata	94.5
1001	Mariana Tuhirangi Jack	94.5
1002	Cherri Marahia Robyn Annette Waata-Vale	94.5
1003	Ngapaea Edna Manukau Whanau Trust	83
1004	Bruce Francis Moki	89.75
1005	Te Rahui (Hugh) Moki	89.75
1006	Lavaine Dawn Moki	89.75
1007	Evelyn Wilson	1.715
1008	William Dennis Smith	1.715
1009	Victor Hamish Smith	1.714
1010	Gayelene Smith	1.714
1011	Violet Smith	1.714
1012	Lincoln Smith	1.714
1013	John Wade Smith	1.714
1014	Elizabeth Eruatua Tangaere	107
1015	Davina Murray	107
	TOTAL SHARES	99125

ŌTAKANINI TŌPŪ INCORPORATION

UNCLAIMED DIVIDENDS

Ōtakanini Tōpū - Unclaimed Dividends



Please Note: When dividend is queried it will be double checked that it is unclaimed before payment is made

Owner Number	Name	Shares
610	Arna Maree Smith for a life interest with remainder to Violet Abraham	37
72	Himi Aperahama or Himi (Jimmy) Abraham	14
787	James Abraham	13
849	Thomas Samuel Abraham	37
784	Connie Akariri	59
785	Donna Kororia Akariri	58
268	Maungatai Akariri	696
119	Mu Pairama or Mu Akariri	15
877	George Albert	46
371	Barbara Anne Anderson	8
141	Morini Aperahama	15
198	Ruiha Aperahama	15
402	Terekia Aperahama	37
172	Pepahi Te Arahi or Pepahi Riki Kapea or Te Pehi Te Arahi	502
885	Whanau Atawhai Whanau Trust	83
897	Racheal Lee Avega	18
742	Mere Atarangi Baker	101
474	Ina Brown or Ina Baldwin	12
767	Athleen Barlow	20
769	Raelene Barlow	20
766	Robert Barlow	20
768	Sharlene Barlow	20
809	Jocelyn Aroha Beazley Whanau Trust	28
10	Aroha Adele Paul or Aroha Adele Paora or McMahon or Bird	185
837	Priscilla Ann Bowater-Gudsell	5
377	Diane Myone Rangitatau Bradley	127
468	Amiria Brown or Amiria Tahī Piri Brown or Paraone or Mrs Towai Manuel or Miria Tahī Piri Paraone (Mrs Towai Manuel)	108
470	Elizabeth Brown (Mrs)	39
472	George Cullen Brown	12
805	Glenn Brown	2
806	Jenny Brown	2
476	Kapu Brown or Kapu Tahī Piri Paraone, deceased	108

Ōtakanini Tōpū - Unclaimed Dividends

803	Brown	Lance Brown	3
477	Brown	Louis Hemana Brown	118
804	Brown	Lynda Brown	2
479	Brown	Netana Karl Brown or Karl Netana Brown	12
807	Brown	Paula Brown	2
483	Brown	Piripono Gittos Brown	12
485	Brown	Reginald Happy Brown or Reginald Hapi Brown	12
801	Brown	Sharon Brown	2
486	Brown	Tapihana Brown	12
481	Brown	Te Pera Nellie Brown or Nellie Te Pera Brown	12
802	Brown	Wendy Brown	3
488	Buckley	Kathleen Buckley	39
492	Bycroft	Peter Karl Bycroft	50
490	Bycroft	Rena Hinemoa Bycroft	270
622	Cartman	Margaret Carman (Tua) for life or until remarriage with remainderman equally to: Dianne Stephens, Norma Rae Arlidge, Margaret Ofoski, Hinemoa	1123
122	Cartman	Mariana Cartman or Pomare, deceased	536
521	Christiansen	Jean Rerewairua Hira or Christiansen	603
889	Connelly	Marie Connelly	31
308	Connelly	Te Puawai Manukau or Te Puawai Blossom Connelly	83
223	Connelly	Timi Hori Konore or Connelly or Jimmy Connelly	31
130	Connelly	Meeke Hori Konore or Max Connelly	31
495	Connelly	Mihi Pine Connelly	62
98	Conroy	Kathleen Paenganui or Kathleen Conroy	52
535	Cooper	Mihi Patoromu Wenei Maihi or Mihi Tanga Kupa or Elizabeth Cooper	13
765	Corcoran	Coral Amelia Corcoran	154
694	Cornell	Jan Cornell or Jan Hanuere Cornell	41
235	Cross	Thomas Napier Cross or Tamati Nepia Cross or Tamati Paki Cross	2034
430	Cross	Thomas B D Cross	106
670	Cruickshank	Tuata Cruickshank	20
496	Curtis	Reokore Curtis or Reokore P Curtis	12
690	Davis	Mercia Davis or Mercia Te Kara Davis	42
609	Davis	Prince Davis or William Prince Davis	416
773	Davis	Violet Davis	19
418	Dawson	Rangi Marie Anne Karena or Marie Karena or Marie Dawson	70
665	Delves	Hayden Delves	4
667	Delves	Katarina Delves	4
666	Delves	Nadia Delves	4
882	Desai	Te Awatea Desai	20
275	Dick	Elaine Luana Uruamo Porter or Elaine Luana Uruamo Dick	144
413	Dunn	Tua Hine Girlie Dunn	11

Ōtakanini Tōpū - Unclaimed Dividends

863	estate	Allan George Massey and Pomare Paki Kena as executors of the Puti Rachael Kena estate	160
567	Fairburn	Wairuora Paikea or Fairburn (Mrs)	3
387	Glavish	Rahera Kepa Glavish	5
844	Graham	Alice Areta Graham	35
662	Grey	George Hemi Grey	12
55	Grey	Hinemoa Weneiti Maihi or Mrs Ruby Grey	3
296	Haimona	Karewai Haimona	13
79	Haku	Hohipera Teira or Sophie Haku (Mrs)	33
59	Haotahi	Hotatu Pita Panui or Haotahi Panui or Hautahi Parata or Hautahi Haotahi	13
811	Hapeta	Denise Beryl Hapeta	25
761	Hauptapa	Aorangi Irene Hauptapa	155
250	Hawke	Wirihana Hawke	13
822	Heihei	Roseanne Heihei	4
858	Hemana	Charlene Maree Hemana	19
798	Hemana	Diane Te Aroha Hemana	8
832	Hemana	Henry William Hemana	19
857	Hemana	Howard Hemana	19
789	Hemana	Jimmy Temepara Hemana	9
799	Hemana	John Tamihana Hemana	8
795	Hemana	Liza Pethybridge (nee Hemana)	8
791	Hemana	Mara Armstrong (nee Hemana)	9
420	Hemana	Meinata Hemana or Fred Hemana	30
876	Hemana	Meriana Alicia Hemana	72
793	Hemana	Mereana Hemana Wilton or Mary Ann Wilton (nee Hemana)	9
502	Hemana	Ngakuru Hemana	268
922	Hemana	Ngakuru Hemana for a life interest or until remarriage with remainder to: Ngareta Panui 1/7, Patrick Hemana 1/7, Wiremu Hemana 1/7, Marion F	107
503	Hemana	Ngoi Waereti Hemana or Violet Hemana	28
794	Hemana	Petera Hemana	8
792	Hemana	Puawai Hemana	9
800	Hemana	Robyn Charles Hemana	8
856	Hemana	Shane Dennis Hemana	19
796	Hemana	Toby Andrew Hemana	8
797	Hemana	Tui Hemana	8
257	Hemana	Waina Waimaria Hemana	159
852	Hemana	Whetumarama Kauahia Hemana (Mrs Matthew Dunn)	7
685	Hemopo	Dahlia Hemopo	2
288	Herangi	Rawerawe Herangi (Mrs)	13
2	Herewini	Ani Herewini or Ani Kapea Herewini	374
831	Herewini	Herewini Whanau Trust	17
510	Herewini	John Pukeroa Herewini	251

Ōtakanini Tōpū - Unclaimed Dividends

210	Herewini	Reo Ngaro Taihi Panui or Reo Ngaro Teihi Panui or Herewini (Mrs) or Te Reo Ngaro Te Ihi Herewini	2
879	Herewini	Rupe Te Auma Herewini	60
671	Hill	Eileen Hill	5
611	Hill	George Henry Hill or George Hill	15
30	Hill	George Rapana Hill	800
674	Hill	Haretuku Hill or Harry Haretuku Hill	25
672	Hill	Harold Hill or Harold Mathew Hill	15
676	Hill	Hemoata Hill	2
680	Hill	Holy Hill	1
725	Hill	Jack Hill	10
675	Hill	Joan Hill	2
677	Hill	Lily Hill	2
522	Hill	Martha Hira or Martha Julia Hill	333
678	Hill	Mei Hill	2
669	Hill	Rimene Hill	5
688	Hill	Robert Awa Hill	20
727	Hill	Rosalie Hill	10
512	Hill	Tauhia Hill, deceased	5
514	Hill	Te Waru Hill or Waru Hill	15
679	Hill	William Hill	1
726	Hill(Jnr)	George Hill (Jnr)	10
517	Hira	Arahi Tukua Hira	487
518	Hira	Bella Ngapera Hira (Mrs)	47
584	Hirama	Kiritahanga Thompson as administrator of the estate of Eruera Hirama, deceased	16
154	Hirama	Nepia Hirama	17
153	Hirama	Ngawairo Hirama	17
178	Hirama	Pirihira Hirama	17
260	Hirama	Wharepuhi Hirama	17
749	Hogan	Moko Weera Ututaonga or Hogan	144
817	Hohepa	Anteaus Daniel Hohepa	25
827	Hohepa	Charlene Hohepa	4
812	Hohepa	Charles Hohepa	25
819	Hohepa	Daryn Hohepa	25
820	Hohepa	Frank Frederick Hohepa	25
814	Hohepa	Huia Kenneth Hohepa	25
821	Hohepa	John William Hohepa	24
825	Hohepa	Moana Hohepa	4
813	Hohepa	Nig Brain Hohepa	25
824	Hohepa	Stanley Hohepa	4
816	Hohepa	Stephen Lyal Wayne Hohepa	25

Ōtakanini Tōpū - Unclaimed Dividends

826	Hohēpa	Tania Hohēpa	4
38	Hunia	Hone Haki Hunia II or Hone Haki Hunia or Hone Hunia	41
173	Hunia	Puti Hunia or Puti Haki Hunia	82
651	Iraia	Margaret Wainui Iraia	110
815	James	Jennifer Catherine James	25
848	Jessie	Emma Ann Jessie	35
285	Joe	Korīngo Taunga or Korīngo Joe	8
855	Johnson	George Johnson for a life interest with remainder equally to George Henry Johnson, Emerina Myra Johnson, Antony Edwards Johnson, Richard Ta...	96
504	Johnson	May Johnson or Haerata May Johnson	307
205	Kakarana	Rapine Te Whetu Kakarana	103
681	Kani	Rawinia Kani	3
40	Kapea	Hone Iwingaro Kapea	65
392	Kapea	Karaka Kapea or Karaka Timi Kapea	17
394	Kapea	Mokai Kapea or Mokai Timi Kapea	17
156	Kapea	Nuku Iwingaro Kapea or Nuku Kapea	65
395	Kapea	Poihi Kapea or Poihi Iwingaro Kapea	46
391	Kapea	Roopu Reipa Kingi or Roopu Reipa Timi Kapea	17
393	Kapea	Tauterangimarie Kapea or	17
530	Karena	Christina Karena or Christina Te Pere Karena	14
532	Karena	Raymond Tuku Poto Karena	15
526	Karena	Theresa Karena	10
87	Keepa	Te Kai Keepa	118
151	Kemp	Ngina Rawiri Kepa or Kemp	16
53	Kepa	Hemara Rawiri Kepa	16
52	Kepa	Henare Rawiri Kepa	16
93	Kepa	Kapairoa Rawiri Kepa	16
39	Kerei	Hone Kerei	61
687	Kerei	Irene Rahapati Kerei for life until remarriage with remainder to: Robert Kerei, Frances Turahua Kerei and Willimene Hiria Kerei	61
137	Kerei	Makereta Tahimarae Riki Kerei	29
134	Kerei	Morehu Kerei or Te Morehu Kerei	61
664	Kerei	Pango Pukutohe Kerei	12
663	Kerei	Wira Grey or Wiira Kerei	12
823	Kidwell	Harriet Kidwell	4
380	Komene	Henare Komene or Henare Kaipara Komene	492
383	Komene	Kapowairua Komene or Kapo Kaipara Komene	492
533	Komene	Maisie Tokowha Komene or Mate Te Tokowha Mate Komene	3
143	Komene	Matua Kaipara Mate Komene or Matua Komene or Matua Kaipara Komene	686
382	Komene	Pikiteora Puru (Mrs) or Piki Kaipara Komene	492
127	Konore	Maraea Hori Konore	31
304	Konore	Rangipukohu Konore	83

Ōtakanini Tōpū - Unclaimed Dividends

737	Koppert	Pauline Koppert	11
859	Lazarus	Denise Rekeka Lazarus	19
283	Lazarus	Mihi Mane Lazarus	8
128	Leonard	Maraea Teira or Mrs Maria Leonard	33
534	Mackey	Anna Ngakara Mackey (Mrs)	48
810	Mahanga	Rhoda Whakarongotai Lavinia Mahanga	25
54	Maihi	Hepi Weneti Maihi	3
57	Maihi	Hinenuitepo Okengaroa Weneti Maihi	3
177	Maihi	Pateoro Weneti Maihi	3
228	Maihi	Tawhina Te Reneti Maihi (or Tawhina Te Weneti Maihi)	16
9	Maihi	Te Aroha Weneti Maihi	3
536	Maihi	Timirua Patoromu Weneti Maihi or James Marsh or Timirau Patoromu Weneti Maihi	13
880	Makaore	William Makaore	431
459	Mansell	Arthur Povey or Arthur Mansell or Arthur Tooley Mansell	86
736	Manukau	David Manukau	12
732	Manukau	Kenneth Manukau	12
390	Manukau	Rongo Timi Manukau or Rongo Manukau	17
306	Manukau	Taupae Manukau	166
411	Manukau	Te Rauoriwa Mavis Manukau	11
731	Manukau	Tokena Manukau	12
733	Manukau	Violet Manukau	12
263	Manukau	Wherei Tatana Manukau	148
121	Manukau	Mohi Maata Manukau or Wiremu Manukau**	570
511	Maras	Judith Maras or Judith Mary Maras	2024
15	Mariassouce	Alfred Francois Mariassouce	208
828	Mark	Te Wehenga Herewini or Mark	60
684	Marshall	Allan Marshall	2
682	Marshall	David Marshall	2
686	Marshall	Dick Koitikitiki Marshall	2
683	Marshall	Joe Marshall	2
543	Martin	Tui Martin (Mrs)	251
454	Mason	Puawai Mason (Mrs) or Puawai Povey or Blossom Mason or Puawai Blossom Mason	168
183	Mate	Parata Mate Komene or Parata Mate	2468
313	Matiu	Donald Raymond Matiu	36
847	Matoe	Milly Matoe	35
309	Mathews	George Mathews or George Hill Mathews, deceased	36
544	Mathews	Helen Mathews	36
311	Mathews	Mary Mathews	36
890	Meinata	Frederick & Eva Paraone Meinata Whanau Trust	12
112	Meinata	Mina Hawke or Mina Paraone (Mrs) or Mina Nathan	13

Ōtakanini Tōpū - Unclaimed Dividends

357	Moki	Herewini Moki, deceased	432
362	Moki	Rangi Moki	189
358	Moki	Rihari Moki	431
355	Moki	Te Mahau Moki	179.5
356	Moki	Waata Moki	432
379	Moon	Albert Hepi Moananihi Moon	101
895	Morehu	Anahera Pono ote Haahi Ratana Morehu	254
91	Morehu	Kelvin Leonard Povey or Kelvin Leonard Morehu or Te Reo Haa O Haahi Ratana Morehu	626
372	Morehu	Nga Roihoa Te Morehu	127
376	Morehu	Pumaunoo ote Haahi Ratana Povey or Pumaunoo Ote Haahi Ratana Morehu	127
602	Morehu	Tearoha ote Haahi Ratana Uruamo or Morehu	41
106	Morgan	Meri Hori Konore or Morgan (Mrs)	31
907	Muraahi	Beverley Moana	346
744	Murdock	Peter Maurice Murdock	21
854	Nahi	Alec Britannia Kapea or Alec Britannia Nahi	12
558	Nathan	Ena Adele Porter or Nathan	180
554	Nathan	Eugene Robert Nathan	8
555	Nathan	Harley Louis Nathan	8
556	Nathan	Louis Robin Nathan	8
557	Nathan	Perangi John Nathan or Pirangi John Nathan	8
367	Nathan	Tauwivi Hira Netana or Tom Nathan	20
475	Nathan	Te Kaiarahi Mae Brown or Nathan (Mrs)	12
440	Nehemia	Peggy Nehemia	10
616	Nehemia	Peter Nehemia	129
579	Nia Rua	Richard C G Thompson as administrator of the estate of Niutireni Nia Rua, deceased	270
312	Nicholls	Rebecca Marjorie Matthews or Rebecca Marjorie Friesen or Rebecca Marjorie Nicholls	36
892	Nielsen	Tanya Nielsen	52
85	O'Meara	Isabella Ruarangi or Ruarangi Paikea Ruarangi or Ruarangi Isabella Paikea or O'Meara	354
886	Paa	Ngato Violet Paa	18
204	Paenganui	Riwia Paenganui	52
747	Paikea	Alton Wyatt Paikea	89
703	Paikea	Elaine Mary Paikea for a life interest or remarriage with remainder to: Jack Kevin Paikea, Phillip Wayne Paikea, Lutheena Heke Paikea, Marisa Elaine	11
746	Paikea	Florence Edna May Paikea	88
561	Paikea	Hoki Paikea	3
748	Paikea	Kayne Moana Paikea	89
562	Paikea	Mina Paikea	3
563	Paikea	Muru Ahi Paikea	3
155	Paikea	Nepia Wiremu Paikea or Rere Wiremu Paikea	262
564	Paikea	Paraire Nia Paikea	3
883	Paikea	Polly Paikea	37

Ōtakanini Tōpū - Unclaimed Dividends

745	Paikea	Robin Wayne Paikea	88
414	Paikea	Snowy Haupapa Paikea	11
416	Paikea	Te Ata William Paikea	11
565	Paikea	Te Puea Paikea	3
417	Paikea	Teina Boy Paikea	11
566	Paikea	Waimaria Paikea	3
245	Paikea	Wana Ruarangi Paikea	354
633	Paikea	Wana Rurangi Paikea for life or until remarriage with remainder equally to: Zena Joan Booth, Elaine Mary Paikea, Lynette Moana Smith, Wana Ru	323
619	Paikea	Iraani Paikea for life interest with remainder to Joanne Melody Paikea	354
12	Paairama	Aata Paairama	5
21	Paairama	Eruera Paairama	5
126	Paairama	Maraea Paairama	5
125	Paairama	Mari Paairama	5
120	Paairama	Mohi Paairama	5
881	Paairama	Paairama Family Trust	5
227	Paairama	Tame Paairama	5
730	Paairama	Valencia Rebecca Paairama	500
101	Pakaru	Karoria Harerata Pakaru	5100
216	Panapa	Tame Panapa	131
432	Panui	Charles or Charlie Panui or Charles Te Ihi Panui or Charles T Panui	1
48	Panui	Hemi Teihi Panui or Hemi Te Ihi Panui	122
618	Panui	Marigold Merikoura Panui or Mrs Desmond Panui	434
538	Panui	Matiere Panui	483
398	Panui	Raungaiti Panui or Raungaiti Iwingaro Panui	46
397	Panui	Waina Panui or Waina Iwingaro Kapea or Panui	46
473	Paraone	Haahi Brown or Haahi Tahī Piri Brown or Paraone or Paraone or Hahi Tahī Piri Paraone	108
478	Paraone	Manuao Tahī Piri Brown or Paraone	108
480	Paraone	Pene Brown or Pene Tahī Piri Paraone	107
484	Paraone	Raniera Brown or Raniera Tahī Piri Paraone	108
197	Paraone	Ruihi Hemara Paraone	74
195	Paraone	Rupu Paraone	2
487	Paraone	Tera Brown or Tera Tahī Piri Paraone	107
887	Parata	Charmagne Parata	19
326	Park	Jane or Heni Pereri Tane or Park (Mrs)	24
661	Paterson	Pipiharuroa Miriama Paterson	13
110	Patuwai	Mere Whakarau Hetariki Hemana or Merewhakarau Patuwai	291
642	Peters	Richard Peters	3
615	Peters	Tom Peters	221
908	Phillips	Alexander Phillips	346
911	Phillips	Mark Paneta Phillips (Deceased)	346

Ōtakanini Tōpū - Unclaimed Dividends

916	Phillips	Rangatahi Lance	346
774	Phillips	Mary Kohekohe Phillips	19
660	Pihema	Hapi and Alice Pihema Whanau Trust	260
337	Pihema	Hapi Murray Tautuhi Pihema	32
571	Pihema	Marlene Myrtle Annette Pihema	27
652	Pihema	Meringaroto & Mare Pihema Whanau Trust	89
47	Pomare	Hemi Pomare	139
247	Pomare	Wiremu Pomare	139
256	Poni	Te Whatarauhi Himiona Poni	59
277	Porter	Michael Te Whakariki Uruamo Porter	144
271	Porter	Pukekawa Uruamo or Joe Porter	696
735	Postlethwaite	Winnie Funnel now Ngawini Rua Manukau Paikea Postlethwaite	12
13	Potter	Alma Potter	15
8	Potter	Arthur Potter	15
102	Potter	Kenneth Potter	15
142	Potter	Maggie Naomi Mariassouce or Potter (Mrs) or Margaret Naomi Potter	417
783	Pou	Wikitoria Ani Akariri or Te Pou or Pou	59
700	Povey	Adith Adriana Povey	8
764	Povey	Arthur Henry Povey	154
466	Povey	Ben Povey or Ben Povey (senior) or Ben William Povey or Bernie William Povey	163
708	Povey	Cheryl Tangaroa Sharyn Elsie Maria Povey	6
649	Povey	Colleen Sandra Mathews or Colleen S Povey	46
710	Povey	Darren Povey or Darren Franklyn Povey	5
464	Povey	Henry Povey	168
86	Povey	James Frederick Povey	86
494	Povey	James Povey (jun) or James Povey	46
343	Povey	John Povey Thompson & Selwyn Harry Peters jointly as trustees of the estate of Cyril Myrah Hanatoria Povey	716
465	Povey	Kingi Povey or Kingi Puarangi Povey	168
291	Povey	Kororia Mei Povey or Gloria Timoti or Gloria Mei Povey	7
901	Povey	Lewis H Povey	36
707	Povey	Mark Povey or Mark Mattie Povey	6
834	Povey	Miriam De Ann Povey	10
460	Povey	Parat Povey or Parata Rewiti Povey	168
711	Povey	Pauline Povey or Pauline Timania Povey	5
451	Povey	Poata	8
712	Povey	Virginia Povey or Virginia Ann Bowater Povey	5
648	Povey	Whare William Povey or Whare W Povey	46
461	Povey	Witai or Witiawa Povey (senior) or Witiawa Bill Povey	168
709	Povey	Witiawa Povey or Witiawa Bill Povey	5
900	Povey	Emmanuel W Povey***	26

Ōtakanini Tōpū - Unclaimed Dividends

14	Puke-Watson	Autu te Hanga te Puke or Te Ao Tu Te Puke-Watson	65
339	Pungatara	Geranium Pungatara	80
297	Rangi	Te Aweawe o te Rangi Rapana or Aweaweoterangi Rapana or Te Awe Awe Rangi	219
28	Rankin	Freda Violet Rankin	101
49	Rankin	Heemi Parore Te Awaha Rankin or Heemi Parore Awaha Rankin	101
575	Rapana	Carol Waru Rapana	326
578	Rapana	Karu Rapana (Mrs) as administratrix of the estate of Miki Rapana, deceased	55
695	Rapana	Maungarongo Basil Rapana Whanau Trust	434
621	Rapana	Ngaperā Rapana Kaitiaki Trust (Maori Trustee as kaitiaki trustee)	434
298	Rapana	Rangimarāma Rapana	214
699	Rata	Hauptai Panui Rata Whanau Trust	170
76	Rata	Hauptai Teihi Panui or Rata (Mrs) or Huapai Rata or Hauptau Teihi Rata	1
568	Rata	Nick Rata	80
350	Ratana	Raiha	40
46	Rawhiti	Hori Kupenga Rawhiti	914
163	Rawhiti	Ohaki-o-te-temepara Kupenga Rawhiti or Ohaki Kupenga Rawhiti	14
340	Rawiri	Rose Rawiri	80
924	Reweti	Catherine or Kathryn	62
368	Reweti	Hui Te Rangiora Netana or Mrs Wi Paraha Reweti, deceased	7
927	Reweti	James Reweti or James Te Atū Reweti	62
365	Reweti	Mereore Hira Netana or Mrs Rewi Davis or Mereore Hira Netana Reweti	20
929	Reweti	Nepia Reweti	62
657	Reweti	Newton Terrance Apirana Reweti	111
614	Reweti	Pumau Lawrence Reweti	50
925	Reweti	Tama Reweti or William Tama Reweti	62
232	Reweti	Tumanako Reweti or Rewiti	138
325	Reweti	Urikaimori Pereri Tane or Reweti (Mrs)	24
930	Reweti	Waldon Reweti or Waldron Ngawahakaarara Reweti	63
658	Reweti	William Paratene Reweti	111
931	Reweti	Nolan Reweti or Nolan Parata Reweti	63
866	Reweti	Wiremu Reweti	111
689	Richards	Koromiko Richards	10
576	Richards	Waata Richards or Waata Herewini Richards	60
493	Richards	Wayne Waru Richards	50
132	Riki	Mepara Taruke Wana Paikea or Taruke Isabella Hohepa Riki - (Nathan Dib)	1212
850	Roera	Michael John Royal or Roera	53
159	Roera	Ngahuia Hori Roera	93
580	Shelford	Te Aroha Shelford	3
581	Shortland	Motatau Shortland	19
463	Shortland	Hilda Shortland (Mrs) or Hilda Taurewa Shortland	149

Ōtakanini Tōpū - Unclaimed Dividends

310	Skipworth	Victoria Queenie Matthews or Skipworth	36
107	Smith	Meri Kuru Manukau or Meri Smith	207
734	Smith	Wharemoana Smith	12
582	Speechley	Vivienne Speechley	11
893	Stanley	Gavyn Stanley	52
896	Stead	Bruce Patrick Stead	420
577	Stephens	Harata Stevens or Stephens	54
790	Stevenson	Wikitoria Stevenson (nee Hemana)	9
165	Taitumu	Porera Taitimu or Taitumu	58
583	Takiari	Petrina Tia Takiari	28
740	Talbot	Esther Viola Talbot	517
287	Tamihana	Frances Tamihana	8
286	Tamihana	Putiputi Tamihana	8
284	Tamihana	Rangimaria Tamihana	8
103	Tana	Kerehi Teira or Grace Tana (Mrs)	33
352	Tane	Arthur Tane	40
329	Tane	Cinderella Pereri Tane	24
328	Tane	Fred Pereri Tane	24
67	Tane	Hirini Pakinga Renata Tane	36
349	Tane	Hori Poutawera Tane	40
697	Tane	Michael Denis Tane	40
348	Tane	Peia Tane	40
351	Tane	Petera Komene Tane	40
209	Tane	Renata Paora Renata Tane	36
330	Tane	William or Wiremu Pereri Tane	24
696	Tane	Wiremu Hapati Tane II and Anne Tane Whanau Trust	41
353	Tane	Andrew Walter Tane	40
903	Taogaga	Vale Faatuatuvale Taogaga for a life interest or entry into a civil union or de facto relationship with remainder to Hira Taogaga, Seu Taogaga, Rafi	793
531	Taogaga	Valli Taogaga***	1150
431	Taogaga	Mihiwira Taogaga or Miri Hana Taogaga or Mihiwira Kathleen Taogaga	1401
113	Taotahi	Maroro Parata or Maroro Pita Panui or Matoro Taotahi	13
190	Taotahi	Ripo Parata or Ripo Pita Panui or Hauripo Taotahi	13
956	Tapurau	Ella	43.1
954	Tapurau	Pani Ani	43.1
950	Tapurau	William Michael	43.1
231	Taraia	Tu Piri Paraone Taraia	582
739	Taupo	Ricky Taupo	47
590	Taylor	Chris James (Paraire) Taylor	24
591	Taylor	Elizabeth Taylor (Mrs) or Elizabeth Wihi Taylor	33
370	Taylor	Gilbert Donald Taylor	8

Ōtakanini Tōpū - Unclaimed Dividends

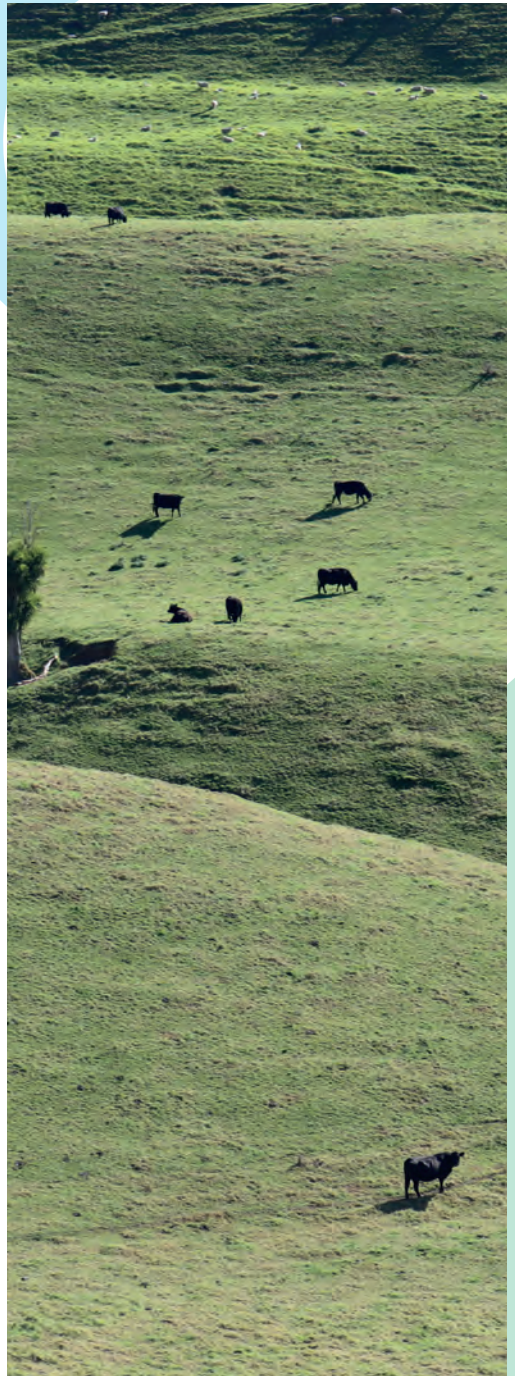
592	Taylor	Ricki Hori Pomare Taylor	23
899	Taylor	Sophie Victoria Waru Taylor for life interest with remainder equally to Rangimarie Louise Harris, Taitimu Winterburn, Theresa Winterburn and Tor	33
241	Taylor	Timoti Teira or Timoti Taylor	33
641	Te Rangi	Whakaotinga Ote Tenepara Te Rangi	10
407	Te Wani	Maggie Te Wani (Mrs)	6
751	Thompson	Edward Thompson	74
593	Thompson	Henry Putaruru Thompson	862
452	Thompson	John Povey Thompson or John Thompson or Oscar John Thompson	168
752	Thompson	Moses Thompson or Mohi Thompson	73
385	Thompson	Norma Thompson	5
753	Thompson	Olive Mary Sant or Olive Mary Thompson	75
293	Thompson	Rerio Grace Thompson	169
841	Timoti	Alan Stewart Timoti	36
594	Timoti	Atawhai Timoti	75
705	Timoti	Charles Timoti or Charles Papa Timoti	307
506	Timoti	Eddy Timoti	27
32	Timoti	Geoffrey Moana Cartman or Geoffrey Moana Timoti	377
843	Timoti	Henry Taa Timoti	35
842	Timoti	Joseph Warren Timoti	35
442	Timoti	Ruby Nathan or Timoti	30
508	Timoti	Sammy (Haami) Timoti or Sam Timoti or Charlie Toto Timoti (Sammy)	123
505	Timoti	Toto Timoti	96
596	Timoti	Tuhirangi Timoti	75
572	Toki	Freda Vera Toki	139
327	Townhill	Mary or Mere Pereri Tane or Townhill (Mrs)	24
646	Trust	Gus and Janet Paikaea Whanau Trust	3
586	Tumahai	Piki Te Ora Waata or Piki Te Ora Marie Waata or Piki Te Ora Marie Tumahai	271
206	Tuni	Rauoriwa Wenei Tamihana or Tunui or Te Rau Orewa Tunui or Olive Tuni	222
597	turoa	Irene Hiria Turoa (Mrs)	8
598	Uruamo	Arthur Uruamo	56
599	Uruamo	David Uruamo	56
600	Uruamo	Eriapa Maru Uruamo	41
69	Uruamo	Hoki Piwara Uruamo	285
116	Uruamo	Mereana Pakiorehua Uruamo or Mereana Pakiorehua Hauraki or Mereana Pakiorehua Uruamo	40
601	Uruamo	Pikiteora Uruamo (Mrs)	696
603	Uruamo	Tio Manaki Uruamo	141
604	Uruamo	William Uruamo	55
545	Waaka	Maniwati Hazel Waaka	12
653	Waata	Aaron Brett Waata	23
588	Waata	Muri Tamihana Waata	182

Ōtakanini Tōpū - Unclaimed Dividends

589	Waata	Poinciana Waata	67
164	Waata	Poupouahi Tawaewae or Poupouahi Wiki Waata	136
324	Waata	Richard Harikoa Ngatiwhatua Waata	567
702	Waata	Ruby Ru Barlow Te Uira Waata for life interest or until remarriage	916
655	Waata	Sharlene Kui Waata	23
319	Waata	Te Hakuene Ngatiwhatua Waata	567
654	Waata	Vernice Rata Waata	23
344	Waiomio	Mei Kaha Waiomio	40
354	Walker	Ronald Waaka or Ronald Walker	225
428	Walsh	Christopher Riki Walsh	10
427	Walsh	Dinah Crystal Walsh	10
426	Walsh	Kenneth John Walsh	9
548	Ward	Hamstead Ward	39
290	Warner	Pamera Te Ruihi Warner	10
750	Watene	Dennies Matilda Watene	323
775	Watene	Fred Watene	19
772	Watene	George Winiata Watene	19
771	Watene	Jack Taoho Watene	19
782	Watene	Malcolm Watene	7
788	Watene	Manya Alexandria Watene	29
115	Watene	Materita Tai Watene or Mararita Watene	29
171	Watene	Paora Tai Watene	125
222	Watene	Timi Tai Watene or Timi Watene	29
780	Watene	Vicky Watene	6
770	Watene	Wiremu Te Whenua Watene	19
781	Watene (Jnr)	Harry Watene (Jnr)	6
443	Waterhouse	John Waterhouse or John Mick Waterhouse	48
833	Waterhouse	Nancy Waterhouse	48
282	Wetere	Mautini Patuwai or Wetere	8
281	Wetere	Mihi Te Rina or Mihi Wetere	8
541	Whakatau	Adam Whakatau	37
542	Whakatau	Brenda Whakatau	37
540	Whakatau	Charlie Whakatau	37
446	Whakatau	Eric Whakatau	37
447	Whakatau	Maria Whakatau	37
539	Whakatau	Pepsi Whakatau	38
445	Whakatau	Raeme Taha Whakatau (Mrs Tay) or Reimepaha Whakatau	37
729	Whakatau	Te Rina Whakatau	37
186	Whakatau	Te Ruma Whakatau	483
301	Wiapo	Kohi Wiapo	83

Ōtakanini Tōpū - Unclaimed Dividends

	Te Kapua-o-te-tiriti-o-Waitangi Moki of Wilcox (Mrs)	1120
99	Wilcox	
410	Williams	6
405	Williams	6
786	Williams	12
211	Williams	33
408	Williams	6
409	Williams	6
406	Williams	6
144	Wiremu	13
160	Wiremu	13
723	Witika	14
716	Witika	14
722	Witika	14
721	Witika	14
717	Witika	14
724	Witika	14
715	Witika	14
719	Witika	14
718	Witika	14
714	Witika	15
720	Witika	14
606	Wright	43
26	Wright	33
607	Wright	33
182	Wynyard	36
957	Young	43
704	Young	92





Ō T A K A N I N I T Ō P Ū

Ōtakanini Tōpū Incorporation
PO Box 183, Helensville 0840
New Zealand

www.otakaninitopu.co.nz